

Arcangelo Corelli
(17 février 1653 - 8 janvier 1713)

Sarabande del S. Corelli

Ré mineur

Manuscrit de Paris F-PnThII

Paris, Bibliothèque Nationale

F-Pn Rés. Vmc ms. 61 (olim: Bibl. Mad. Thibault)

Folio 43r



Sarabande del S. Corelli

Musical notation for the first system (measures 1-3). The key signature is one flat (B-flat). The time signature is 3/4. The notation includes a treble clef, a 3-measure rest, and notes: e, a, r, a, e, a, f, e, a, r, e, r.

Musical notation for the second system (measures 4-6). The notation includes notes: r, a, g, r, e, e, a, r, r, a, r, e, r, e, a. A 4-measure rest is indicated at the end of the system.

Musical notation for the third system (measures 7-9). The notation includes notes: a, r, e, r, e, r, e, r, a, e, e, a, r, e, a, r, e, r, e, e, a, e. A repeat sign is present between measures 8 and 9.

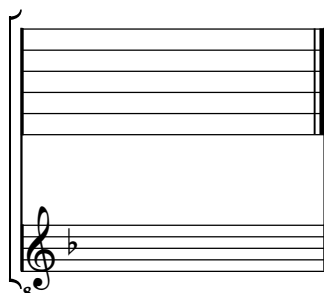
Musical notation for the fourth system (measures 10-12). The notation includes notes: a, b, a, b, a, b, a, b, a, b, a, b, a, b, a, b, a, r, r. A 4-measure rest is indicated between measures 11 and 12.

Musical notation for the fifth system (measures 13-16). The notation includes notes: a, r, b, r, b, a, e, a, r, e, a, e, a, r, r, a, a, a. The system concludes with a double bar line and a fermata over the final note.

Tonalité : Ré mineur

Accord ordinaire des basses du luth

Scordature par octave



Accord des 11 chœurs du luth

