

[Germain Pinel ou Charles Bocquet]
(Fin du XVII^e siècle)

Courante (Courant)

Fa majeur

Manuscrit de Paris F-PnThII

Paris, Bibliothèque Nationale

F-Pn Rés. Vmc ms. 61 (olim: Bibl. Mad. Thibault)

Folio 2r



Courante (Courant)

Musical notation system 1 (measures 1-4). The system consists of two staves. The top staff contains a melodic line with notes and rests. The bottom staff contains a bass line with notes and rests. The first measure is marked with a '3' and the second with a '4'. Handwritten letters 'a', 'e', 'r', 'a' are placed above the notes. A '4' is written below the bottom staff at the end of the system.

Musical notation system 2 (measures 5-8). The system consists of two staves. The top staff contains a melodic line with notes and rests. The bottom staff contains a bass line with notes and rests. Handwritten letters 'a', 'r', 'e', 'e', 'a', 'r', 'a', 'f', 'e' are placed above the notes. A '4' is written below the bottom staff at the end of the system.

Musical notation system 3 (measures 9-12). The system consists of two staves. The top staff contains a melodic line with notes and rests. The bottom staff contains a bass line with notes and rests. Handwritten letters 'a', 'a', 'r', 'a', 'r', 'a', 'r', 'a', 'r', 'a' are placed above the notes. A '4' is written below the bottom staff at the end of the system.

Musical notation system 4 (measures 13-16). The system consists of two staves. The top staff contains a melodic line with notes and rests. The bottom staff contains a bass line with notes and rests. Handwritten letters 'a', 'r', 'a', 'r', 'a', 'r', 'a', 'h', 'h', 'f', 'h', 'a', 'a' are placed above the notes. A '4' is written below the bottom staff at the end of the system.

Musical notation system 5 (measures 17-20). The system consists of two staves. The top staff contains a melodic line with notes and rests. The bottom staff contains a bass line with notes and rests. Handwritten letters 'a', 'a', 'r', 'a', 'r', 'a', 'a' are placed above the notes. A '4' is written below the bottom staff at the end of the system. The system concludes with a double bar line and a decorative flourish.

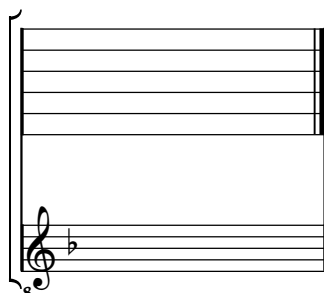
(*)

1. Original : Ré (a sur le 2e chœur)

Tonalité : Fa majeur

Accord ordinaire des basses du luth

Scordature par octave



Accord des 11 chœurs du luth

