

*Silvius Leopold Weiss*

*(1687 - 16 oct. 1750)*

# Bourrée (Bouré)

WeissSW37\*

Do majeur

Manuscrit de Paris F-PnThII

*Paris, Bibliothèque Nationale*

F-Pn Rés. Vmc ms. 61 (olim: Bibl. Mad. Thibault)

*Folio 12r*



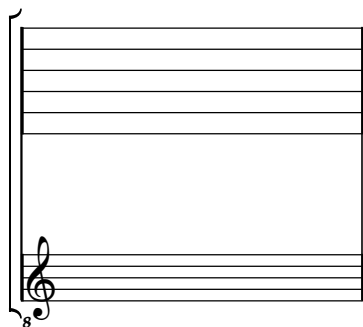
## Bourrée (Bouré)

Musical score for Bourrée (Bouré) in C major, featuring a single melodic line on a five-line staff. The piece is in 3/4 time and consists of 18 measures. The notation includes various rhythmic values (quarter, eighth, and sixteenth notes), rests, and articulation marks such as slurs and accents. The score is divided into systems of three measures each, with measure numbers 3, 6, 9, 12, 15, and 18 indicated on the left. The final measure (18) concludes with a decorative flourish.

# Tonalité : Do majeur

*Accord ordinaire du luth*

## *Scordature par octave*



## *Accord des 11 chœurs du luth*



