

Ferdinand Ignaz Hinterleithner

(ca 1659 - 2 déc. 1710)

[Partie]

Allemande, Bourrée (Bourée), Sarabande

Fa majeur

Manuscrit de Paris F-PnThII

Paris, Bibliothèque Nationale

F-Pn Rés. Vmc ms. 61 (olim: Bibl. Mad. Thibault)

Folios 7v et 8r



[Partie]

Allemande

The image displays a musical score for an Allemande in F major, consisting of six systems of music. Each system includes a rhythmic notation above the staff and a corresponding musical staff with notes and rests. The score is annotated with various symbols and numbers:

- System 1:** Rhythmic notation above the staff. The first measure has a common time signature 'C'. The second measure has a '4' below it, and the third measure has a '(1*)' below it.
- System 2:** Rhythmic notation above the staff. The first measure has a '(2*)' below it, and the second measure has a '(3*)' below it.
- System 3:** Rhythmic notation above the staff. The first measure has a '4' below it, and the second measure has a '4' below it.
- System 4:** Rhythmic notation above the staff. The first measure has a '(4*)' below it, and the second measure has a '4' below it. The third measure has a '(5*)' below it.
- System 5:** Rhythmic notation above the staff. The first measure has a '4' below it, and the second measure has a '4' below it.
- System 6:** Rhythmic notation above the staff. The first measure has a '(6*)' below it.

1. Original : indication rythmique de double-croche
2. Original : pas d'indication rythmique
3. Original : pas d'indication rythmique
4. Original : indication rythmique absente
5. Original : pas d'indication rythmique
6. Original : indication rythmique de croche

Bourrée (Bourée)

Musical notation for the first system of the Bourrée (Bourée). It consists of a single staff in common time (C) with a treble clef. The melody is written in a simple, rhythmic style. The notes are: quarter, quarter, quarter, quarter, quarter, quarter, quarter, quarter. The bass line consists of eighth notes and rests.

Musical notation for the second system, starting at measure 4. It features a treble clef and a common time signature. The melody continues with quarter and eighth notes. The bass line includes a 4-measure rest, followed by eighth notes and a 4-measure rest. A repeat sign is present at the beginning of the system.

Musical notation for the third system, starting at measure 7. It features a treble clef and a common time signature. The melody continues with quarter and eighth notes. The bass line includes a 4-measure rest, followed by eighth notes and a 4-measure rest. A repeat sign is present at the beginning of the system. A box containing the letter 'R' is located below the staff.

Musical notation for the fourth system, starting at measure 10. It features a treble clef and a common time signature. The melody continues with quarter and eighth notes. The bass line includes a 4-measure rest, followed by eighth notes and a 4-measure rest. A repeat sign is present at the beginning of the system.

Sarabande

Handwritten musical notation for the first system of the Sarabande. It consists of a single staff with a treble clef and a 3/4 time signature. The music is written in a cursive style with various ornaments and slurs. The notes are: e', f, e, f, a', r, a, r, a, r, a, r, a, r, a, r, a. There are dynamic markings 'f' and 'ff'. Below the staff, there are handwritten annotations: '3' above the first measure, 'a' below the first measure, '4' below the second measure, '(1*)' below the second measure, 'a' below the third measure, '(2*)' below the third measure, 'a' below the fourth measure, '4' below the fifth measure, and 'a' below the sixth measure.

Handwritten musical notation for the second system of the Sarabande, starting at measure 5. It consists of a single staff with a treble clef. The music continues with cursive notation and ornaments. The notes are: a', r, a, r, a', r, a, r, a, r, a, r, a, r, a, r, a. There are dynamic markings 'f' and 'ff'. Below the staff, there are handwritten annotations: '4' below the first measure, 'a' below the second measure, 'a' below the third measure, 'a' below the fourth measure, 'a' below the fifth measure, 'a' below the sixth measure, 'a' below the seventh measure, 'a' below the eighth measure, and '4' below the ninth measure.

Handwritten musical notation for the third system of the Sarabande, starting at measure 9. It consists of a single staff with a treble clef. The music continues with cursive notation and ornaments. The notes are: a, r, a, r, a, r, a, r, a, r, a, r, a, r, a, r, a. There are dynamic markings 'f' and 'ff'. Below the staff, there are handwritten annotations: 'a' below the first measure, 'a' below the second measure, 'a' below the third measure, 'a' below the fourth measure, 'a' below the fifth measure, 'a' below the sixth measure, 'a' below the seventh measure, 'a' below the eighth measure, and 'a/a' below the ninth measure.

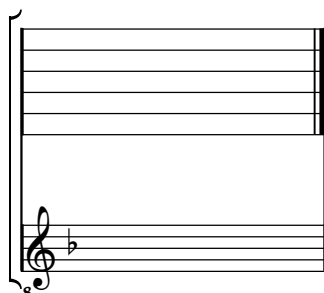
Handwritten musical notation for the fourth system of the Sarabande, starting at measure 13. It consists of a single staff with a treble clef. The music continues with cursive notation and ornaments. The notes are: f, h, f, h, a', r, a, r, a, r, a, r, a, r, a, r, a. There are dynamic markings 'f' and 'ff'. Below the staff, there are handwritten annotations: 'a' below the first measure, 'a' below the second measure, 'a' below the third measure, 'a' below the fourth measure, 'a' below the fifth measure, 'a' below the sixth measure, 'a' below the seventh measure, 'a' below the eighth measure, and 'a' below the ninth measure. A boxed 'R' is written below the first measure, and '(3*)' is written below the third measure.

1. original : pas d'indication rythmique
 2. original : pas d'indication rythmique
 3. Original : indication rythmique de noire non pointée

Tonalité : Fa majeur

Accord ordinaire des basses du luth

Scordature par octave



Accord des 11 chœurs du luth

