

[Compositeur anonyme]
[(fin du XVII^e - début du XVIII^e siècle)]

Aria

Fa majeur

Manuscrit de Paris F-PnThII

Paris, Bibliothèque Nationale

F-Pn Rés. Vmc ms. 61 (olim: Bibl. Mad. Thibault)

Folio 6r



Aria

Musical notation for the first system of the Aria. It consists of a single staff with a treble clef and a common time signature (C). The melody is written in a cursive style with various note values and rests. The lyrics 'a r r e r' are written below the staff. There are also some decorative flourishes and a '4' below the staff.

Musical notation for the second system of the Aria, starting at measure 4. It consists of a single staff with a treble clef and a common time signature (C). The melody continues with various note values and rests. The lyrics 'a r r e r' are written below the staff. There are also some decorative flourishes and a '4' below the staff.

Musical notation for the third system of the Aria, starting at measure 7. It consists of a single staff with a treble clef and a common time signature (C). The melody continues with various note values and rests. The lyrics 'a r r e r' are written below the staff. There are also some decorative flourishes and a '4' below the staff.

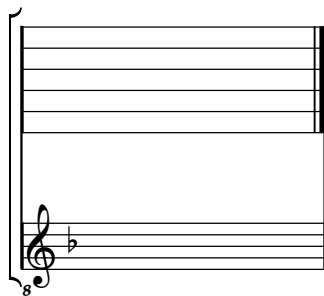
Musical notation for the fourth system of the Aria, starting at measure 11. It consists of a single staff with a treble clef and a common time signature (C). The melody continues with various note values and rests. The lyrics 'r r a r e' are written below the staff. There are also some decorative flourishes and a '4' below the staff.

Musical notation for the fifth system of the Aria, starting at measure 15. It consists of a single staff with a treble clef and a common time signature (C). The melody continues with various note values and rests. The lyrics 'e f f e r r a r a' are written below the staff. There are also some decorative flourishes and a '4' below the staff.

Tonalité : Fa majeur

Accord ordinaire des basses du luth

Scordature par octave



Accord des 11 chœurs du luth

