

[Compositeur anonyme]

(2^e partie du XVII^e siècle)

[2 pièce]

Prelude, Allemande (Alemand)

Fa majeur

Manuscrit de Paris F-PnThII

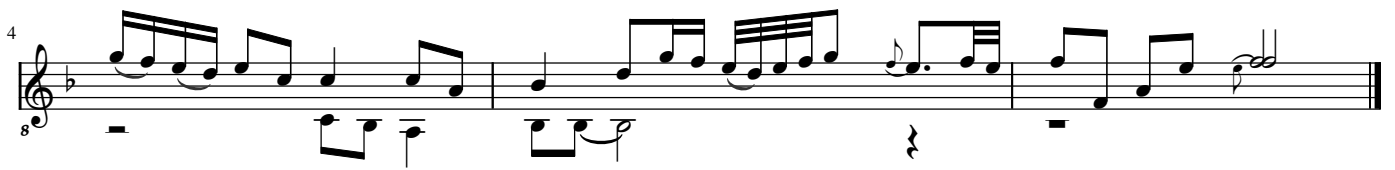
Paris, Bibliothèque Nationale

F-Pn Rés. Vmc ms. 61 (olim: Bibl. Mad. Thibault)

Folio 1v



Prelude



Allemande (Alemand)

The image displays a musical score for the piece "Allemande (Alemand)". The score is written in treble clef, common time (C), and F major. It consists of five systems of music, each with a treble staff and a figured bass staff. The first system starts with a treble staff containing a quarter note G4, followed by a dotted quarter note G4, and then a quarter note G4. The bass staff contains a 7, followed by two flats (Bb and Eb), and then a 6. The second system starts with a treble staff containing a quarter rest, followed by a quarter note G4, and then a quarter note G4. The bass staff contains an 8va, followed by a flat (Bb), and then a 6. The third system starts with a treble staff containing a quarter note G4, followed by a quarter note G4, and then a quarter note G4. The bass staff contains an 8va, followed by a flat (Bb), and then a 6. The fourth system starts with a treble staff containing a quarter note G4, followed by a quarter note G4, and then a quarter note G4. The bass staff contains an 8va, followed by a flat (Bb), and then a 6. The fifth system starts with a treble staff containing a quarter note G4, followed by a quarter note G4, and then a quarter note G4. The bass staff contains an 8va, followed by a flat (Bb), and then a 6.

