

*Silvius Leopold Weiss*

(1687 - 16 oct. 1750)

# Preludio

WeissSW 75.1

Fa majeur

**Manuscrit de Paris I**

*Paris, Bibliothèque Nationale*

F-Pn Rés. Vma ms. 1213 (olim : Bibl. Mad. Thibault)

*Weiss à Rome*

*Pages 17 et 18*

*Voir dans le manuscrit Harrach A-ROI, pages 2 et 3 (folios 1v. et 2r.),  
la Fantasia di Sig.re Sylvio Weis. de la Suite 1. [HRI\_1]*



Preludio

1

2

3

4

5

6

7

8

1. Note absente de la tablature originale

9 *m*

10 *m*

11 *m*

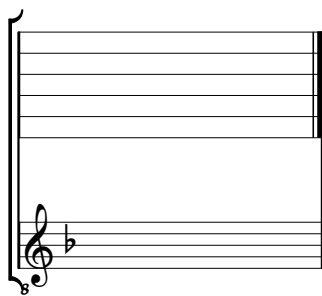
12 *m*

13 *m*

1. Note absente dans la tablature originale.

# Accord du luth : Fa majeur.

## *Scordature par octave*



## *Accord ordinaire des 11 chœurs du luth*

Musical notation for 'Accord ordinaire des 11 chœurs du luth'. It consists of two staves. The upper staff has five lines and a brace on the left. It contains eleven 'a' notes (representing natural A) positioned on the strings: the first six are on the top line, the seventh is on the first space, and the last four are on the first space. The last four notes are grouped together with a slash and a '4' below them. The lower staff is a standard treble clef with a key signature of one flat (F major) and contains a sequence of eleven quarter notes: F, C, F, C, F, C, F, C, F, C, F.