

*Silvius Leopold Weiss*

(1687 - 16 oct. 1750)

# Adagio, Allegro et Adagio

WeissSW 44\*

Do majeur

**Manuscrit de Paris I**

*Paris, Bibliothèque Nationale*

F-Pn Rés. Vma ms. 1213 (olim : Bibl. Mad. Thibault)

*Weiss à Rome*

*Pages 5 à 7*

# Adagio

Musical score for Adagio, featuring a single melodic line on a five-line staff. The score is divided into measures, with measure numbers 4, 7, 10, 12, 16, and 19 indicated on the left. The notation includes various rhythmic values (quarter, eighth, and sixteenth notes), rests, and dynamic markings such as *mf* and *f*. The piece concludes with a decorative floral ornament.

The score consists of the following measures:

- Measures 1-3: Initial melodic phrase with a common time signature.
- Measure 4: Continuation of the melodic line.
- Measures 5-6: Further development of the melody.
- Measures 7-9: Melodic passage with dynamic markings.
- Measures 10-11: Melodic passage with dynamic markings.
- Measures 12-15: Melodic passage with dynamic markings.
- Measures 16-18: Melodic passage with dynamic markings.
- Measures 19-20: Final melodic phrase, ending with a decorative floral ornament.

# Allegro

7

h g f h r a r

3

4

6

9

12

15

(1\*)

The image shows a single-line musical score for a piece titled 'Allegro'. The notation is a form of rhythmic shorthand, likely a tablature, consisting of letters (h, g, f, a, r, e) and symbols (circles, vertical lines, slurs) placed above and below a five-line staff. The score is divided into measures, with measure numbers 3, 6, 9, 12, and 15 indicated on the left. Above the first measure, the letters 'h g f h r a r' are written. Above the 12th measure, the letters 'h g f' are written. Above the 15th measure, the letters 'h r a r a r' are written. The score ends with a double bar line and a decorative flourish of leaves and flowers. The tempo 'Allegro' is written at the top left.

1. Tablature originale : le rythme indiqué est une croche.

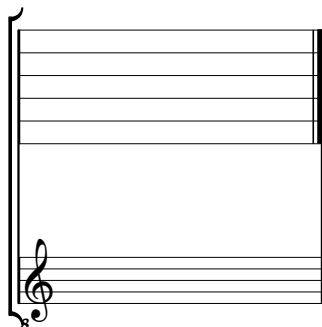
# Adagio

Handwritten musical notation for three systems. The first system features a treble clef and a series of notes with various ornaments and slurs, with time signatures 4, 4, 4, 5, 4, 4, and 4 below. The second system is marked with a '2' and contains notes with ornaments and slurs, with a time signature 'a' below. The third system is marked with a '3' and contains notes with ornaments and slurs, with time signatures 'a', 'a', 'Ba', and 'a44' below.



# Accord du luth : Do majeur.

*Scordature par octave*



*Accord ordinaire des 13 chœurs du luth*

Musical notation for the ordinary tuning of 13 lute voices. The top staff shows the notes for the 13 voices, with the first six notes labeled 'a' and the last seven notes labeled 'a / a' / a' / a' / a' / 4 / 5 / 6. The bottom staff shows the notes for the 13 voices, with the first six notes on a treble clef and the last seven notes on a bass clef.