

Johann Kropffgans
(1708 - 1770)

Pastorella del Sig^{re}. Kropffgans

Do majeur

Manuscrit de Munich D-Mbs5362

Munich, Bayerische Staatsbibliothek

D-Mbs ms. Mus. 5362

Folios 4v, 5r



Pastorella del Sig^{re}. Kropffgans

Handwritten musical score for 'Pastorella del Sig^{re}. Kropffgans'. The score is written in 3/8 time and consists of seven systems of music, each with a vocal line and a lute line. The music features various rhythmic patterns, including triplets and sixteenth notes, and dynamic markings such as 'pia.', 'fort.', and 'f'. The key signature is one sharp (F#).

System 1 (Measures 1-6):
 Measures 1-2: 3/8, 8/8, 4/4, 4/4, 4/4, 4/4, 4/4, 4/4.
 Measures 3-6: 4/4, 4/4, 4/4, 4/4, 4/4, 4/4.

System 2 (Measures 7-12):
 Measures 7-12: 4/4, 4/4, 4/4, 4/4, 4/4, 5/4. Includes 'fort.' marking.

System 3 (Measures 13-17):
 Measures 13-17: 5/4, 5/4, 4/4, 4/4, 4/4. Includes 'pia.' and 'fort.' markings.

System 4 (Measures 18-22):
 Measures 18-22: 6/8, 6/8, 6/8, 6/8, 6/8. Includes 'pia.' marking.

System 5 (Measures 23-28):
 Measures 23-28: 4/4, 4/4, 4/4, 4/4, 4/4, 4/4. Includes '(1*)' and 'pia.' markings.

System 6 (Measures 29-34):
 Measures 29-34: 4/4, 4/4, 4/4, 4/4, 4/4, 4/4. Includes 'f' marking.

System 7 (Measures 35-38):
 Measures 35-38: 6/8, 6/8, 6/8, 6/8, 6/8, 6/8.

1. Original : indication rythmique de triolet

41

5 6 a 6 a a a 6 a 6 a a a

47

5 a a a 4 a a a 4 a a a 4

53

4 a a 4 a a a a a e a

59

a 4 4 a a a a a a

65

5 4 a a a a 4 a a

73

a a a 4 4 4 4 4

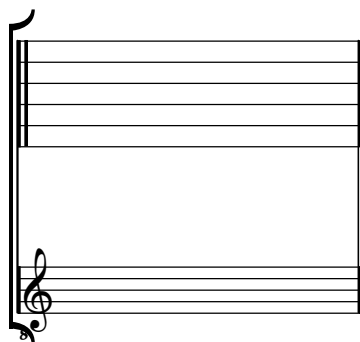
79

4 a a a a a 4 a a

Tonalité : Do majeur

Accord ordinaire du luth

Scordature par octave



Accord des 13 chœurs du luth

