

Adam Falkenhagen

(1697 - 1754)

Menuet del Sig^{re} Falckenhagen

Menuet del Sig^{re} Falckenhagen, Variatio.

Ré majeur

Manuscrit de Munich D-Mbs5362

Munich, Bayerische Staatsbibliothek

D-Mbs ms. Mus. 5362

Folio 32r



Menuet del Sig^{re} Falckenhagen

♩ ♪ ♪ ♩ ♪ ♪ ♩ ♪ ♩ ♪

3
4

5 ♩ ♩ ♪ ♩ ♪ ♪

♩ ♩ ♪ ♩ ♪ ♪

9 ♩ ♪ ♩ ♪ ♪ ♩ ♩ ♪

♩ ♩ ♪ ♩ ♪ ♪

13 ♩ ♩ ♩ ♩ ♪

♩ ♩ ♪ ♩ ♪ ♪

Variation (Variatio)

1

5

9

13

[Menuet del Sig^{re} Falckenhagen et variation en duo]

Handwritten musical score for a Minuet and Variation in D major, featuring a duo of voices and a lute accompaniment. The score is divided into four systems, each with a vocal line and a lute line. The lute line includes fret numbers and rhythmic notation.

System 1: The vocal line begins with a treble clef and a 3/4 time signature. The lute line has a 4/4 time signature. The first measure of the vocal line is *a r b r a*, and the first measure of the lute line is *a a a a*.

System 2: The vocal line continues with *a a e a* in the first measure. The lute line continues with *a a a a* in the first measure.

System 3: The vocal line has *r a r a* in the first measure. The lute line has *a a a* in the first measure.

System 4: The vocal line has *b r b a* in the first measure. The lute line has *a a a* in the first measure.

System 5: The vocal line has *a a e r a* in the first measure. The lute line has *a a a* in the first measure.

System 6: The vocal line has *a r r a e r* in the first measure. The lute line has *a a a* in the first measure.

System 7: The vocal line has *e r a a* in the first measure. The lute line has *e e e* in the first measure.

System 8: The vocal line has *a e r a* in the first measure. The lute line has *a a a* in the first measure.

System 9: The vocal line has *a r e a r r* in the first measure. The lute line has *a a a* in the first measure.

System 10: The vocal line has *r r e r a* in the first measure. The lute line has *a a a* in the first measure.

System 11: The vocal line has *a e r a* in the first measure. The lute line has *e e e* in the first measure.

System 12: The vocal line has *a a e r a* in the first measure. The lute line has *a a a* in the first measure.

System 13: The vocal line has *r r e r a* in the first measure. The lute line has *a a a* in the first measure.

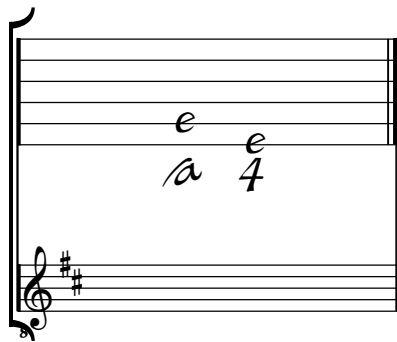
System 14: The vocal line has *a b a e* in the first measure. The lute line has *a a e* in the first measure.

System 15: The vocal line has *a a b a* in the first measure. The lute line has *a a a* in the first measure.

Tonalité : Ré majeur

Accord des basses du luth : 2 dièses

Scordature par octave



Accord des 13 chœurs du luth

The diagram shows a lute fretboard with six strings. The top two strings have notes 'a' and 'a' written above them. The bottom two strings have notes 'a' and '4' written below them. The bottom two strings also have notes 'a', 'a', 'a', 'a', 'a', 'a', 'a', 'a', 'a', 'a', 'a', 'a', 'a' written above them. Below the fretboard is a treble clef staff with a key signature of two sharps (F# and C#).

