

[Compositeur anonyme]

Prélude (Prelude)

Do majeur

Manuscrit de Munich D-Mbs5362

Munich, Bayerische Staatsbibliothek

D-Mbs ms. Mus. 5362

Folio 2r



Prélude (Prelude)

Handwritten musical score for 'Prélude (Prelude)' in C major, featuring a single melodic line with various ornaments and fingerings. The score is organized into measures, with measure numbers 2, 3, 6, and 7 indicated on the left. The notation includes notes, rests, and ornaments (such as mordents and grace notes) above the notes. Fingerings are indicated by numbers 1-5 below the notes. The piece concludes with a double bar line and repeat dots.

Measure 1: C4 quarter, F4 quarter, F4 quarter, F4 quarter, F4 quarter, F4 quarter, F4 quarter, A4 quarter, F4 quarter, F4 quarter, F4 quarter, F4 quarter, F4 quarter, F4 quarter, F4 quarter, G4 quarter.

Measure 2: A4 quarter, F4 quarter, F4 quarter, A4 quarter, A4 quarter, F4 quarter, A4 quarter, A4 quarter, A4 quarter, F4 quarter, F4 quarter, A4 quarter, A4 quarter, F4 quarter, G4 quarter, E4 quarter, E4 quarter, A4 quarter.

Measure 3: A4 quarter, G4 quarter, F4 quarter, F4 quarter, A4 quarter, F4 quarter, A4 quarter, A4 quarter, A4 quarter, F4 quarter, F4 quarter, A4 quarter, A4 quarter, F4 quarter, G4 quarter, A4 quarter.

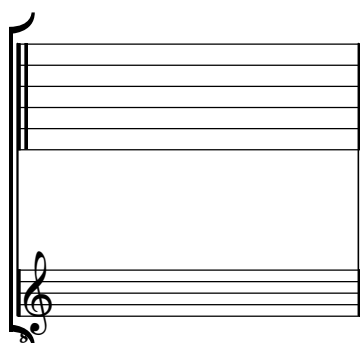
Measure 6: G4 quarter, A4 quarter, G4 quarter, E4 quarter, E4 quarter, A4 quarter, A4 quarter, G4 quarter, A4 quarter, G4 quarter, A4 quarter, G4 quarter, A4 quarter, G4 quarter, A4 quarter, G4 quarter, E4 quarter, E4 quarter, E4 quarter, E4 quarter.

Measure 7: G4 quarter, A4 quarter, G4 quarter, A4 quarter, G4 quarter, E4 quarter, E4 quarter, A4 quarter, A4 quarter, G4 quarter, A4 quarter, G4 quarter, A4 quarter, G4 quarter, A4 quarter, G4 quarter, A4 quarter, G4 quarter, A4 quarter.

Tonalité : Do majeur

Accord ordinaire du luth

Scordature par octave



Accord des 13 chœurs du luth



