

[Compositeur anonyme]

Menuet

Do mineur

Manuscrit de Munich D-Mbs5362

Munich, Bayerische Staatsbibliothek

D-Mbs ms. Mus. 5362

Folio 14v



Menuet

Musical notation system 1 (measures 1-4). Includes treble and bass staves, notes (h, f, a, g), dynamic markings (f), and time signatures (3/4, 4/4).

Musical notation system 2 (measures 5-8). Includes treble and bass staves, notes (f, a, g, h), dynamic markings (f), and time signatures (4/4).

Musical notation system 3 (measures 9-12). Includes treble and bass staves, notes (r, a, g, a), dynamic markings (f), and time signatures (4/4).

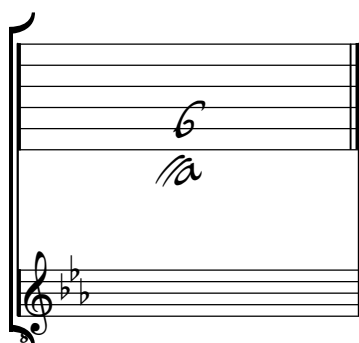
Musical notation system 4 (measures 13-17). Includes treble and bass staves, notes (a, r, g, a, e, f, e, g, h), dynamic markings (f), and time signatures (6/8, 4/4). Includes a repeat sign with 'R' below.

Musical notation system 5 (measures 18-21). Includes treble and bass staves, notes (g, h, f, a), dynamic markings (f), and time signatures (4/4). Ends with a decorative flourish.

Tonalité : Do mineur

Accord des basses du luth : 1 bémol

Scordature par octave



Accord des 11 chœurs du luth

Musical notation for the 11 voices of the lute. It consists of a treble clef with two flats (B-flat and E-flat) and a guitar staff. The guitar staff has 11 'a' notes written above the lines, and a '4' written below the staff. The notes are: a, a, a, a, a, a, a, a, a, a, a.

