

[Jacques Gallot]
(ca 1625 - après 1690)
d'après Jean-Baptiste Lully

Entre D'apollon

CLFGal III, N°12 (LWV 59/58)

Sol mineur

Kalmar, Manuscrit Stålhammar

Kalmar läns museum

S-Klm ms 21072

Folios 89v et 90r

Voir dans le manuscrit de Berlin D-Bsa4060, pages 380 et 381 (folio 169v et 170r) Apollon ou Triomphe de l'Amour p[ar] Monsieur Gallot (DBsa4060_187)

Voir dans le présent manuscrit Stålhammar de Kalmar S-Klm21072, folios 127v et 128r, Entrée D'Apollon. (SKlm21072_74)



Entre D'apollon.

4

8

11

15

19

23

Handwritten musical notation for measures 23-26. The top staff contains a melodic line with notes: a, r, a, a, a, a, a. The bottom staff contains a bass line with notes: a, r, a, b, a, b, r, a, a, b, a.

27

Handwritten musical notation for measures 27-30. The top staff contains a melodic line with notes: a, r, a, a, r, a, r, a, a, r, a. The bottom staff contains a bass line with notes: a, a, a, 4, a, a, a, r, a, r.

31

Handwritten musical notation for measures 31-33. The top staff contains a melodic line with notes: a, a, a, a, a, a, a, a, a, a, a. The bottom staff contains a bass line with notes: a, b, r, a, b, a, b, a, b, a, b, a.

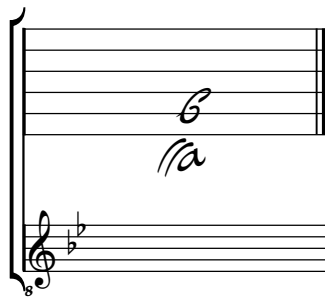
34

Handwritten musical notation for measures 34-35. The top staff contains a melodic line with notes: a, r, a, a, r, a, a. The bottom staff contains a bass line with notes: a, a, a, 4, a, a, a. The piece ends with a decorative flourish.

Tonalité : Sol mineur

Accord des basses du luth : Mi bémol

Scordature par octave



Accord des 11 chœurs du luth

