

*Charles Mouton*  
(janvier 1617 - avant 1699)

# Prelude De Mouton

Do mineur

Kalmar, Manuscrit Stålhammar  
*Kalmar läns museum*  
S-Klm ms 21072  
*Folio 54v.*



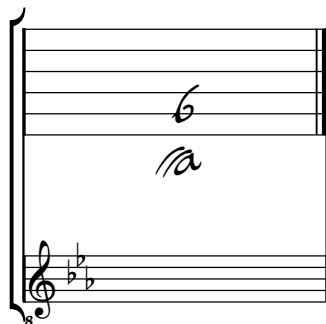
## Prelude De Muton

Handwritten musical score for "Prelude De Muton" by Charles Mouton. The score is written on a grand staff with a common time signature (C) and a 4-measure bar. The notation is in a shorthand style, using letters (a, b, r, e, f, h, i, g) and symbols (circles, lines) to represent notes and rests. The piece is divided into measures 1-4, 3-6, 6-10, 10-13, and 13-16. The final measure (16) ends with a double bar line and a 4-measure bar.

# Tonalité : Do mineur

*Accord des basses du luth : 1 bémol*

*Scordature par octave*



*Accord des 11 chœurs du luth*



