

***Jacques Gallot***  
*(autour de 1625 - après 1690)*

# 4 pièces

Do majeur

**Manuscrit d'Haslemere GB-HAB2**

*Haslemere, Carl Dolmetsch Library*

**GB-HAdolmetsch ms II.B.2**

*Pages 184 et 185*

*Sans correspondance.*



# *Les pièces*

*Tombeau de Mars. Allemande P[ar] Gallot*

*Courante. La Grondeuse. Gallot*

*La Moscovite. Sarabande Gallot*

*Nopce au Village. Gallot*

# Tombeau de Mars. Allemande P[ar] Gallot

Handwritten musical score for lute tablature, showing rhythmic notation above and below the staff, with letters (a, r, e, f, h) and accidentals (accents, flats) indicating fingerings and pitch. The score is divided into systems, each starting with a measure number (4, 7, 10, 13, 16, 19). Measure indicators (1-4) are present in some measures. A double bar line with repeat dots is used at measure 10. A decorative flourish ends the piece at measure 19. A 'R' (Ritardando) and '(2\*)' are noted at the end of measure 16.

1. Les chiffres indicateurs de mesure sont absents de la tablature originale.  
2. Tablature originale : Ré (a sur le canto).

# Courante. La Grondeuse. Gallot

3

5

11

16

21

26

(1\*)

1. Tablature originale : Sol (c sur la chanterelle) et Fa (d sur le canto).

# La Moscovite. Sarabande Gallot

3

6

13

18

25

32

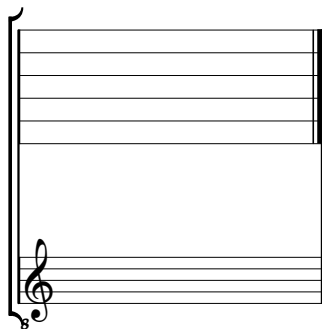
1. Tablature originale : l'ornement est une appoggiature descendante.

# Nopce au Village. Gallot

Musical score for "Nopce au Village" by Jacques Gallot. The score is written on a single staff with a treble clef and a common time signature. It consists of four systems of music. The first system (measures 1-4) starts with a C-clef and contains notes with stems and beams, and rests. The second system (measures 5-9) continues the melody with various note values and rests. The third system (measures 10-14) includes a repeat sign and a "R" marking. The fourth system (measures 15-16) ends with a double bar line and a decorative flourish. Fingerings are indicated by numbers 1-5 below notes. Dynamics like "f" and "ff" are present. A "4" is written below the staff in several places, possibly indicating a measure rest or a specific fingering.

Tonalité : Do majeur.

*Scordature par octave*



*Accord ordinaire des 11 chœurs du luth*

A musical staff with a treble clef and a sub-octave sign below it. The staff contains a sequence of notes: a, a, a, a, a, a, a, a, a, a, a. The notes are written in a descending sequence from the top line of the staff to the bottom line. The final note is followed by a double bar line and the number 4. The notes are labeled with 'a' above them.