

*Adam Falkenhagen*

(26 avril 1697 - 1754)

[Suite]  
Falkenhagen

Si bémol majeur

**Manuscrit d'Haslemere**

*Haslemere, Carl Dolmetsch Library*

GB-HAdolmetsch ms II.B.2

*Pages 150 à 152*



# *Les pièces de la Suite*

*Courante. (Falckenhagen)*

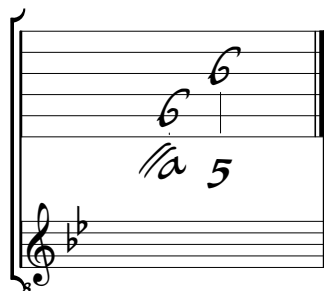
*Gigue. (Falkenhagen)*

*Menuet. (Falkenhagen)*

*Pastorelle. (P[ar] le même)*

Tonalité : Si bémol majeur.

*Scordature par octave*



*Accord des 12 chœurs du luth*



# Courante. Falckenhagen

Musical score for Courante by Falckenhagen. The score is written in 3/4 time and consists of six systems of music. The notation includes various rhythmic values (quarter, eighth, sixteenth notes), rests, and fingerings. The score is divided into measures, with measure numbers 5, 9, 13, 18, and 23 indicated. The notation includes various rhythmic values (quarter, eighth, sixteenth notes), rests, and fingerings. The score is divided into measures, with measure numbers 5, 9, 13, 18, and 23 indicated.

System 1: Measures 1-4. Time signature 3/4. Notes: *a r a*, *6 a 6 a 2 6*, *a a 6 a a 6*, *6 a 6 a 2 6*, *a a 6 a a 6*.

System 2: Measures 5-8. Notes: *r a 6 a r a 6 a r a*, *6 a 2 a 6*, *a 6 a 6 a 6 a 6 a 6*, *a a 2 6 2 a*.

System 3: Measures 9-12. Notes: *6 a 2 a 6 a 2 a 6 a 2 a*, *6 2 6 a 6 2*, *a 2 6 2 a 2 6 2 a r r*, *r a r 2 a r*.

System 4: Measures 13-17. Notes: *a r a r 2 r*, *a 2 a r a*, *a h f h f h h f a*, *f h f f a h*.

System 5: Measures 18-22. Notes: *h f h a h a*, *a a 2 a*, *2 f e f 2*, *f e f e f*, *r e r e r*.

System 6: Measures 23-27. Notes: *e r e r a*, *6 a 6 6 a 6 6 a 6*, *2 r 2 2 r 2 2 r 2*, *6 a 6 6 a 6 6 a 6*.

(1\*)

1. 2 basses absentes de la tablature originale.

27

32

37

42



1. Tablature originale : La (a sur le 3ème chœur).

2. Tablature originale : Sol dièse, Ré, Do (d sur la chanterelle, a sur le canto, d sur le 3ème chœur : permutation des lettres).





# Menuet. Falkenhagen

Musical score for Menuet Falkenhagen. The score is written in a single system with a 3/4 and 4/4 time signature. The key signature is one flat (B-flat). The notes are written in a stylized, handwritten font. The score is divided into measures, with measure numbers 6, 12, 18, 24, and 30 indicated on the left. The notes are accompanied by fingerings (e.g., 1, 2, 3, 4, 5) and dynamics (e.g., *f*, *h*, *9*, *9x*, *9fx*). The score ends with a double bar line and repeat dots.

1. Tablature originale : Do (d sur le 6ème chœur).




36

a aka a aha .h k h k e fe fa  
 i i i i g f d  
 a a R a a a a a a a

44

fa ba ba ba a ara a a ba a a  
 a a a a a a a a  
 a a a a a a a a 5



# Pastorelle.

## P[ar] le même

2/4

5

9

13

18

Fin

(1\*)

4

5

5

[Da Capo]

1. Tablature originale : Mi bémol (b sur le canto).