

*[Compositeur anonyme]*

# Bourée

Sol majeur

## **Manuscrit d'Haslemere**

*Haslemere, Carl Dolmetsch Library*

**GB-HAdolmetsch ms II.B.2**

*Page 125*

*Sans correspondance.*



# Bourée.

1 2 3 4

4 5 6 7 8

9 10 11 12 13

14 15 16 17 18

19 20 21 22

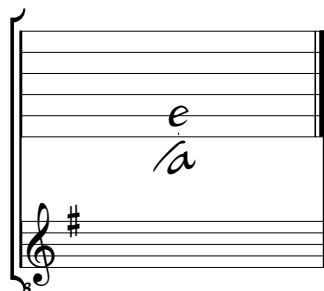
23 24 25 26

27 28 29 30

1. Note absente de la tablature originale.  
 2. Tablature originale : Mi bémol (e sur le canto).

# Tonalité et accord du luth : Sol majeur

## *Scordature par octave*



## *Accord des 12 chœurs du luth*



Musical notation showing the 12-voice lute chord. The upper staff is a five-line system with a brace on the left. The notes 'a' are written on the first, second, third, fourth, and fifth lines. The lower staff is a five-line system with a treble clef and a sharp sign (#) on the first line. The notes are: G#4, A4, B4, C5, D5, E5, F#5, G#5, A5, B5, C6, D6. The notes are grouped into four groups of three notes each, with the last group being 'a / a / a 4 5'.