

*[Compositeur anonyme]*

# Rigadon Menuet et Trio Bourée

Sol majeur

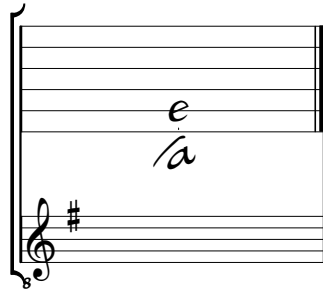
**Manuscrit d'Haslemere**  
*Haslemere, Carl Dolmetsch Library*  
GB-HAdolmetsch ms II.B.2  
*Pages 123 et 124*

*Sans correspondance.*



# Accord du luth : Sol majeur

*Scordature par octave*



*Accord des 12 chœurs du luth*



# Rigadon.

Musical score for Rigadon, featuring rhythmic notation and fingerings. The score is divided into measures, with measure numbers 5, 10, 15, and 21 indicated. The notation includes rhythmic symbols (vertical stems with flags) and fingering numbers (1-5) placed above or below the notes. The notes are represented by letters 'a', 'e', 'r', and 'g'. The score is written on a single staff with a common time signature (C).

The score consists of the following measures:

- Measures 1-4: Initial rhythmic pattern with notes 'r', 'a', 'r', 'a', 'a', 'a', 'a', 'a'.
- Measures 5-8: Continuation of the pattern with notes 'a', 'a', 'a', 'a', 'a', 'a', 'a', 'a'.
- Measures 9-12: Continuation of the pattern with notes 'a', 'a', 'a', 'a', 'a', 'a', 'a', 'a'.
- Measures 13-16: Continuation of the pattern with notes 'a', 'a', 'a', 'a', 'a', 'a', 'a', 'a'.
- Measures 17-20: Continuation of the pattern with notes 'a', 'a', 'a', 'a', 'a', 'a', 'a', 'a'.
- Measures 21-24: Final section of the score, ending with a double bar line and a decorative flourish.







# Bourée.

Handwritten musical score for Bourée, featuring a single melodic line on a five-line staff. The music is written in a style characteristic of early manuscript notation, with notes and rests represented by stems and flags. The piece is in Sol major and 3/4 time. The score is divided into measures, with bar numbers 5, 10, 15, 20, and 26 indicated on the left. The notation includes various rhythmic values (quarter, eighth, and sixteenth notes) and rests. The piece concludes with a double bar line and a decorative floral ornament.

5

10

15

20

26

