

[Compositeur anonyme]

[4 pièces]

Ré majeur

Manuscrit d'Haslemere

Haslemere, Carl Dolmetsch Library

GB-HAdolmetsch ms II.B.2

Pages 55 et 56

Pas de correspondance.



Les pièces

Gavotte

Menuet

Bourée

Gigue

Gavotte

Handwritten musical score for Gavotte, featuring a single staff with rhythmic notation above and a six-line staff with notes and clefs below. The score is divided into measures, with measure numbers 4, 8, 11, 15, and 19 indicated on the left. The notation includes various note values (quarter, eighth, sixteenth notes), rests, and clefs (C-clef and G-clef). The notes are labeled with letters 'a', 'e', 'r', and 'f'. The score concludes with a double bar line and a decorative flourish.

4

8

11

15

19

Menuet

Handwritten musical score for a Minuet in G major, featuring a 3/4 time signature and a treble clef. The score is divided into four systems, each with a five-line staff and a corresponding line of handwritten notes and fingerings. The notes are written in a shorthand style, with letters 'a', 'e', 'r', and 'g' representing notes and '4', '6', '5', '4', '5' representing fingerings. The first system starts with a 3/4 time signature and a treble clef. The second system begins with a measure number '6'. The third system begins with a measure number '13'. The fourth system begins with a measure number '20' and ends with a double bar line and a decorative flourish.



Bourée

1. Tablature originale : présence d'un Ré (a sur le canto) au dessus du Do dièse et d'une basse Si (e sur le 7ème chœur).

Gigue

Handwritten musical score for a Gigue, featuring rhythmic notation above the staff and letter-based notation (a, e, r, g, b) below. The score is divided into measures, with bar numbers 5, 11, 16, 21, and 26 indicated on the left. The time signature is 6/8.

Measures 1-4: *a a a r e r a a a e r a r b r b a a a*

Measures 5-10: *e r a e r e r e a r a e r e a a r r r e r a r a e r e r a r a e r*

Measures 11-15: *e a e e a e e a e e a e e a e e a e e a e r a e e r a*

Measures 16-20: *a e r e a r a e e r a e r a a e e e e r r e e e*

Measures 21-25: *r b r e a e e e r b r r b r r b r r b r r b r r b r*

Measures 26-30: *b r r a e e r a a e r r b r a a r a a r a b r b a a*

31

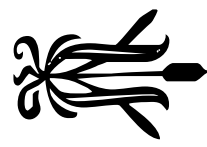
reare e e f faffa faffa faffa

36

faffa a e r e r e r a r e r a e a a e r f e r r e e

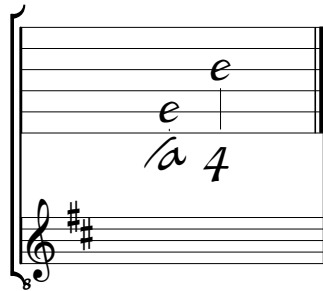
42

e r e r a a e r e r e r a r e r a e a



Accord du luth : Ré majeur

Scordature par octave



Accord des 13 chœurs du luth

