

Compositeur anonyme

Courante

Ré majeur

Manuscrit d'Haslemere

Haslemere, Carl Dolmetsch Library

GB-HAdolmetsch ms II.B.2

Page 46



Courante

Musical score for Courante, starting with a 3/4 time signature. The score is written on a single staff with a treble clef. The notes are represented by letters: 'a' for the tonic, 'e' for the second degree, 'r' for the third degree, and 'g' for the fourth degree. The notes are often beamed together in groups. The score is divided into measures, with bar lines and repeat signs. The piece concludes with a double bar line and repeat dots.

3/4
 a r e | a e a r a e | a e a r e r e a r a | e a e r e

5
 r e r e | e r r a | e e e r e | a a e a g | g r g r r a | r r e a

11
 r a r e r a | r a r e a | e e e r e | e a r | e e e r e | g r a

17
 r r e | g r a | r r e | a e g e | g r r | e g e g

23
 a g a r a g | a g a r a g | g a r e | e r a g | e e r g | e e

28
 g a r | e r e a a | r a r a e a | e r e a a | r a r a e | e a r a e r

34

♪ ♪ ♪ ♪ ♪ ♪ ♪ ♪ ♪

6) ere a 6 6 6 r ere a raare a e a 6 6

a b a e r a b a e r e r a a

40

♪ ♪ ♪ ♪ ♪ ♪ ♪ ♪

ra er e era e a r r e r e r r e r e r e a r a e a e a

a a a a e a a a a R a a a a

47

♪ ♪ ♪ ♪ ♪ ♪ ♪ ♪

geg re r ere are r e r e ar eafaha e a a a r r a r a

a a a a a a a a a a b

54

♪ ♪ ♪ ♪ ♪ ♪ ♪ ♪

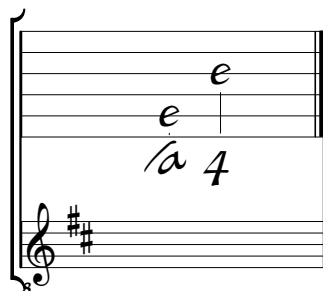
e are fahaka ha e a e f a a a a a a a

a a a a a a a a a R a a a a



Tonalité et accord du luth : Ré majeur

Scordature par octave



Accord des 11 chœurs du luth

