

Gottfried Meusel

(1688 - 1728)

Suite pour luth solo
del sig^{re}. Meusel

[sol majeur]

Manuscrits Harrach, Schloss Rohrau

NYPL mss Harrach V12

(Folios 13 à 21)

Les pièces de la suite

- 1 - Intrada
- 2 - Allemande
- 3 - Bourée
- 4 - Menuet
- 5 - Sarabande
- 6 - Gavotte
- 7 - Gigue

- Intrada

A musical score for a piece titled "Intrada". The score is written on ten staves, each beginning with a treble clef, a key signature of one sharp (F#), and a common time signature (C). The music is characterized by a steady, rhythmic accompaniment in the lower register, often consisting of chords or pairs of notes. The upper register features a more active melodic line with eighth and sixteenth notes, some of which are beamed together. The piece concludes with a double bar line and repeat dots at the end of the final staff.

8
7
11
16
22
27
33
39
46
53
58

- Allemande

du même.



- Bourée

du même.

8

4

8

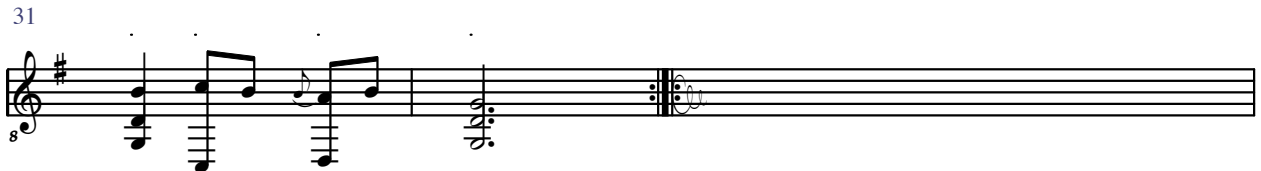
12

15

Segue Menuet

- Menuet

du même



- Sarabande

du même

8

6

10

14

20

24

28

32

- Gavotte

du même



- Gigue

du même

The image displays a musical score for a piece titled "Gigue" from a collection "du même". The score is written for a solo lute in G major (one sharp) and 3/4 time. It consists of ten staves of music, each beginning with a measure number: 3, 5, 7, 9, 12, 14, 16, 18, and 20. The notation includes a treble clef, a key signature of one sharp (F#), and a 3/4 time signature. The music is characterized by a rhythmic pattern of eighth and sixteenth notes, often beamed together. The piece concludes with a double bar line and a repeat sign at the end of the final staff.