

[Compositeur anonyme]

Partie

Allemande, Courante (Courente), Bourrée (Bouree),
Rondeau, Aria, Gigue (Guigue)

Do majeur

Manuscrit de Göttweig 1, A-GÖ1

Bibliothèque de l'abbaye bénédictine de Göttweig

Archives musicales

(A-GÖ ms. Lautentabulatur Nr. 1)

Folios 2v. à 4r.



[Partie]

Allemande

1

C

3

a *a* *r* *a* *a* *a* *r* *r* *r* *r* *a* *a* *a* *r* *r* *e* *r*

6

a *r* *a* *r* *a* *r* *a* *e* *e* *a* *e* *r* *a* *r* *r* *e*

9

a *r* *a* *a* *r* *a* *r* *a* *r* *a* *r* *a* *r* *a* *a* *r* *a*

12

a *a* *r* *e* *a* *r* *a* *r* *e* *r* *a* *a* *a* *r* *a* *r* *a*

15

18

21

24

1. Original : triple-croche

Courante (Courente)

3 *r* | *r* *r* *a* *r* | (*r* *a*) *r* | *r* *a* *r* *a*

4 *r* *a*) *r* | *a*) *r* *a* *r* *r* | *a* *a* *a* *a* *a* | *r* *r* *r* *a*

8 *r* *a* *r* *a* *r* | *a* *f* *e* | *a* *h* *a* | *h* *e* *f* *h*

12 *h** | *r* *a* *r* *a* | *a* *a* *a* *a* | *a* *a* *a*

16 *r* *a*) *r* *a* | *r* *a* *a* | *r* *r* *a* | *a* | *r* *a* *r* *r*

20 *a* *e* | *r* *r* *a* | *e* *r* *a* | *r* *a* *a*

24

4

28

4

32

4

36

4

40

4

44

4

1. Original : pas d'indication rythmique

Bourrée (Bouree)

Handwritten musical score for Bourrée (Bouree) in C major, 4/4 time. The score is divided into systems of four measures each, with measure numbers 4, 8, 12, 16, and 21 indicated on the left. The notation includes a treble clef, a common time signature (C), and various rhythmic values (quarter, eighth, and sixteenth notes). The melody is written on a single staff, and the bass line is indicated by letters 'a', 'r', 'e', 'f' and rhythmic markings below the staff. The piece concludes with a double bar line and repeat dots at the end of the fourth measure of the fifth system.

4

8

12

16

21

26

(1*)

31

(2*)

35

40

R

44

R

48

1. Original : indication rythmique de noire non pointée
 2. Original : pas d'indication rythmique

Rondeau

♪
♪ ♩
♪
♪ ♩

4

9

14

19

24

29

34

39

43

48

R

52

4

Aria

1. *h* h h k-h k h' k h k a r, a*

2. *f g h a g h e a a r a r e r a a r a e r a a r a*

3. *a r e r a a r a a a a a a a a a*

4. *r r r* e r e r e r e a a r a r*

5. *e e e e r a a r a r a r a a a r a a*

6. *f e f e f e f e e a a r a r*

7. *h* h h k-h k h' k h k a r, a*

Fine

Da Capo

1. Original : pas d'indication rythmique

10

Handwritten musical notation for measure 10. The staff contains notes: f, g, h, a, g, h, g, h, e, r, r, a, r, r, a, r, r, r. Below the staff, there are rhythmic markings: a triplet of 'a's, another triplet of 'a's, and a quadruple note 'a' marked with '(1*)'.

11

Handwritten musical notation for measure 11. The staff contains notes: a, a, a, a, a, r, r, r, r, a, a, a, a, r, r, r, r. Below the staff, there are rhythmic markings: a quadruple note 'a' marked with '4'.

13

Handwritten musical notation for measure 13. The staff contains notes: a, a, a, a, a, r, r, r, r, r, a, r, r, a, r. Below the staff, there are rhythmic markings: a triplet of 'a's, a quadruple note 'a' marked with '(2*)', and another quadruple note 'a' marked with '(3*)'.

15

Handwritten musical notation for measure 15. The staff contains notes: a, r, a, a, r, a, a, r, a, a, b, a, a, b, a, a, r, a, r, r, r. Below the staff, there are rhythmic markings: a triplet of 'a's, another triplet of 'a's, and a quadruple note 'e' marked with '4'.

16

Handwritten musical notation for measure 16. The staff contains notes: r, e, r, a, e, a, r, e, r, r, e, r, r, r, e, r, r, e, r. Below the staff, there are rhythmic markings: a quadruple note 'a' marked with '4'.

17

Handwritten musical notation for measure 17. The staff contains notes: r, r, r, r, r, a, b, a, a, b, a, a, a, a, a, r, r, r, r. Below the staff, there are rhythmic markings: a quadruple note 'a' marked with '4'.

18

Handwritten musical notation for measure 18. The staff contains notes: e, r, a, r, r, r, r, r, r, a, r, r, a, r, r. Below the staff, there are rhythmic markings: a triplet of 'a's, a quadruple note 'a' marked with '(4*)', and another triplet of 'a's.

Da Capo

1. Original : indication rythmique de quadruple-croche (x2)
 2. Trois notes illisibles sur le fac-similé
 3. Original : pas d'indication rythmique à la fin de cette mesure
 4. Original : pas d'indication rythmique

Gigue (Guigue)

6 8

h g h f h a

r r r r r

e r a r a r

4 *a a*

4

a a r r r

a a a a a a

r r a r r r

a a a a a a

a

4 *a*

8

r r a r r r

r a r a a

r r b b

r b r e r e

a a

a r

a

a a

a a

12

g e f e a

a r a

e e

e e r a

f e f e

a

e a

a a

16

f f f f

r r a r a

a a r b r

a r a r

a

a

a

20

24

28

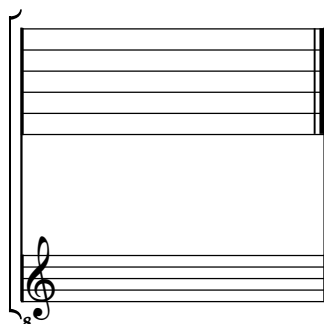
32

35

1. Original : note absente
 2. Original : pas d'indication rythmique
 3. Original : indication rythmique sur la note précédente

Tonalité : Do majeur
Accord ordinaire du luth

Scordature par octave



Accord ordinaire des 11 chœurs du luth

