

Johann Georg Weichenberger

[(1676 - 1740)]

[Partie] W.

Allemande (Alemande) W., Courante, Bourrée (Bouree),
[Menuet en rondeau], Sarabande, Gigue (Guigue)

Sol majeur

Manuscrit de Göttweig 1, A-GÖ1

Bibliothèque de l'abbaye bénédictine de Göttweig

Archives musicales

(A-GÖ ms. Lautentabulatur Nr. 1)

Folios 37r. et 39r.

*Voir dans le manuscrit Brno CZ-Bm372, pages 9 à 13, Suite en Sol majeur
(CZBm372_4)*

*Voir dans le manuscrit Harrach volume 11 US-NYp11, pages 21 à 39,
Suite pour luth accompagné (Luth, Violon, Basse) en Sol majeur
[HRV11_2]*



13

$\text{g e g} \quad \text{e f e f e f} \quad \text{b r b} \quad \text{r b r} \quad \text{r r a r} \quad \text{r b r} \quad \text{a r a}$
a g a a a a a a

15

$\text{r a r} \quad \text{e b r b r b} \quad \text{r b r} \quad \text{r a} \quad \text{a} \quad \text{r a} \quad \text{e a} \quad \text{a a}$
a a a a a a a a

17

$\text{r} \quad \text{a r a} \quad \text{r a r} \quad \text{e r e} \quad \text{r e r} \quad \text{e g h g h g e g e} \quad \text{f g e f}$
a a 4 a a a a 4

19

$\text{e a k*} \quad \text{k h k h k h} \quad \text{h k h k h k} \quad \text{g e f e f e}$
a a a a 4 a

21

$\text{e} \quad \text{f e f e f e f e} \quad \text{e x f e} \quad \text{f k h k h k h g} \quad \text{f}$
e a a 4 a a a a

23

$\text{g e (g e r)} \quad \text{f a f a r}$
a a

Courante

3 4

3 4

4

4

8

8

12

12

16

16

20

20

Bourrée (Bouree)

Musical score for Bourrée (Bouree) in Sol major. The score consists of six systems of music, each with a single melodic line on a five-line staff. The notation includes various rhythmic values (quarter, eighth, and sixteenth notes), rests, and fingerings (indicated by numbers 1-5). The piece is in a 4/4 time signature.

System 1: Measures 1-3. Measure 1: quarter note G4. Measure 2: eighth notes G4, A4, B4, A4, G4. Measure 3: eighth notes G4, A4, B4, A4, G4.

System 2: Measures 4-7. Measure 4: eighth notes G4, A4, B4, A4, G4. Measure 5: eighth notes G4, A4, B4, A4, G4. Measure 6: quarter note G4, quarter note A4. Measure 7: quarter note B4, quarter note G4.

System 3: Measures 8-10. Measure 8: quarter note G4, quarter note A4. Measure 9: quarter note B4, quarter note A4. Measure 10: quarter note G4, quarter note A4.

System 4: Measures 11-14. Measure 11: eighth notes G4, A4, B4, A4, G4. Measure 12: eighth notes G4, A4, B4, A4, G4. Measure 13: eighth notes G4, A4, B4, A4, G4. Measure 14: eighth notes G4, A4, B4, A4, G4.

System 5: Measures 15-17. Measure 15: eighth notes G4, A4, B4, A4, G4. Measure 16: eighth notes G4, A4, B4, A4, G4. Measure 17: eighth notes G4, A4, B4, A4, G4.

System 6: Measures 18-21. Measure 18: eighth notes G4, A4, B4, A4, G4. Measure 19: eighth notes G4, A4, B4, A4, G4. Measure 20: eighth notes G4, A4, B4, A4, G4. Measure 21: eighth notes G4, A4, B4, A4, G4.

20

Handwritten musical notation for measures 20-22. The top staff shows a vocal line with notes and rests. The bottom staff shows a lute tablature with letters (b, r, a) and rhythmic markings (triplets, 4).

23

Handwritten musical notation for measures 23-24. The top staff shows a vocal line with notes and rests. The bottom staff shows a lute tablature with letters (r, a) and rhythmic markings (4, triplet). The piece ends with a decorative floral ornament.

[Menuet en rondeau]

Handwritten musical score for "Menuet en rondeau" in Sol major. The score is written on a grand staff with treble and bass clefs. It includes various musical notations such as notes, rests, slurs, and dynamic markings like 'f' and 'ff'. The piece concludes with a decorative flourish.

Measures 1-7: 3/4 time signature, 4-measure repeat sign. Notes: a, r, a, r, g, e, f, e, f, e, f, k, h, h, h, g, f, e, i, g, e, f, e.

Measures 8-14: 4-measure repeat sign. Notes: a, a, r, r, a, a, a, e, r, e, r, f, e, e, r, e, e, a, g, e, e.

Measures 15-20: Notes: r, e, r, x, a, e, f, a, r, r, a, r, r, a, g, x, e, f, e, f, e, e, f.

Measures 21-27: 4-measure repeat sign. Notes: k, h, h, h, g, f, e, i, g, e, f, e, f, r, r, r, a, b, e, r, i, e, r, e, r.

Measures 28-35: Notes: r, r, a, f, r, a, e, f, e, h, a, g, e, g, f, r, r, a, r, r, a, r, r, a, g, e, f.

Measures 36-40: Notes: e, f, e, e, f, k, k, h, h, h, e, h, f, g, e, h, e, f, e, f, f. Ends with a decorative flourish.

1. Si (g sur la chanterelle) dans les autres manuscrits

Sarabande

3 4

5

10

15

19

23

Gigue (Guigue)

Musical score for Gigue (Guigue) in Sol major, 3/8 time. The score is divided into systems of six measures each, with measure numbers 7, 13, 19, 25, and 31 indicated at the beginning of their respective systems.

System 1 (Measures 1-6): The first measure is marked with a '3' above the staff and an '8' below it. The notes are a, r, r, r, e, a. The second measure contains a slur over r, r, e, a. The third measure contains r, r, a. The fourth measure contains a slur over r, r, e, a. The fifth measure contains r, a, a. The sixth measure contains a slur over r, r, e, a.

System 2 (Measures 7-12): The notes are a, r, a, r, r, e, e, r, e, a, r, e, a, e, f, e, g, a, g, e, a, e. The fourth measure has a slur over e, a, r. The fifth measure has a slur over e, a, e, f, e. The sixth measure has a slur over g, a, g.

System 3 (Measures 13-18): The notes are r, r, e, r, e, r, r, e, e, e, r, r, r, a, a, a. The second measure has a slur over r, e. The third measure has a slur over e, r, r. The fourth measure has a slur over r, e, e. The fifth measure has a slur over e, r, r. The sixth measure has a slur over r, a, a.

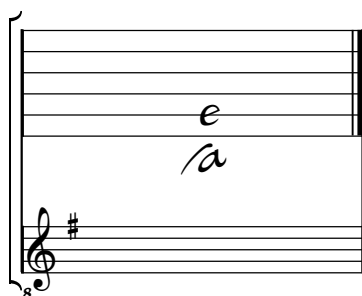
System 4 (Measures 19-24): The notes are r, e, r, a, r, e, a, r, e, a, a, a, a, a, e, e, e, r, e, e, a. The second measure has a slur over e, a, r, e, a. The third measure has a slur over a, a, a, a. The fourth measure has a repeat sign. The fifth measure has a slur over e, e, r, e. The sixth measure has a slur over e, a.

System 5 (Measures 25-30): The notes are a, a. The second measure has a slur over a, a, a, a. The third measure has a slur over a, a, a, a. The fourth measure has a slur over a, a, a, a. The fifth measure has a slur over a, a, a, a.

System 6 (Measures 31-36): The notes are e, e, r, e, r, e, r, g, x, g, e, e, e, f, f, f, e, e, e, e, r, r, r. The second measure has a slur over e, r, g, x. The third measure has a slur over g, e, e. The fourth measure has a slur over e, f, f. The fifth measure has a slur over f, e, e. The sixth measure has a slur over e, r, r.

Tonalité et accord du luth : Sol majeur

Scordature par octave



Accord des 11 chœurs du luth

