

**Comte Bergen**  
*Johann Ferdinand Wilhelm, Graf von Bergen*  
(1678 - 1766)

# [Partie]

Allemande, Courante, Bourrée (Bouree),  
Sarabande, Menuet, Gavotte, Gigue (Guigue)

Fa majeur

**Manuscrit de Göttweig 1, A-GÖ1**  
*Bibliothèque de l'abbaye bénédictine de Göttweig*  
*Archives musicales*  
(A-GÖ ms. Lautentabulatur Nr. 1)  
*Folios 30r - 32r*

*Voir dans le manuscrit de Vienne A-Wn1078, folios 15v à 19r :*  
*[Partie]. [V1078\_3]*

*Voir dans le manuscrit de Grüssau PL-Wu2004, folios 13r à 16r :*  
*Parthia Ex F. [PLWu2004\_5]*



# [Partie]

## Allemande

Handwritten musical score for Allemande, featuring a single staff with rhythmic notation and pitch letters (a, r) above and below the staff. The score is divided into measures by vertical bar lines. Above the staff, rhythmic symbols (m, n, j, etc.) are written. Below the staff, pitch letters (a, r) are written. The score includes a key signature change to one sharp (F#) and a time signature change to 4/4. The piece ends with a double bar line and repeat dots.

3

5

6

(\*)

(2\*)

1. Original : Ré (a sur le 5e chœur)

2. Original : indication rythmique de croche

9

Handwritten musical notation for measures 9-10. The staff contains two measures. The first measure has notes *f e f a r a r e f a r a a b*. The second measure has notes *r a r a e x a e f a a r*. Rhythmic markings below the staff include *a*, *4*, *a*, *a*, *a*, and *(1\*)*.

11

Handwritten musical notation for measures 11-12. The staff contains two measures. The first measure has notes *a r r a r r r a*. The second measure has notes *b a a b a a a a*. Rhythmic markings below the staff include *a*, *4*, *a*, and *a*.

13

Handwritten musical notation for measures 13-14. The staff contains two measures. The first measure has notes *a b a b a f*. The second measure has notes *a b a r a b a r b a*. Rhythmic markings below the staff include *a*, *a*, *4*, *a*, *a*, *4*.

15

Handwritten musical notation for measures 15-16. The staff contains two measures. The first measure has notes *a b a f x a r a*. The second measure has notes *a a a*. The piece ends with a double bar line and a decorative flourish. Rhythmic markings below the staff include *a*, *4*, *a*, *4*, *a*.

1. Original : indication rythmique de noire pointée

# Courante

3  
4  
1\*

4

4

4

4

2\*  
4

1. Original : La (e sur le 4e chœur)

2. Original : indication rythmique de noire pointée

28

4 4 4 4

32

# Bourrée (Bouree)

Handwritten musical score for Bourrée (Bouree) in C major, 3/4 time. The score consists of five systems of music, each with a treble clef and a common time signature. The notation includes notes, rests, and various ornaments. Measure numbers 4, 8, 13, 17, and 21 are indicated at the start of their respective systems. The piece concludes with a decorative flourish in the final measure.

1. Original : indication rythmique de croche  
 2. Original : La (a sur le 6e chœur)

# Sarabande

4

8

12

16

20

25

(1\*)

(2\*)

(3\*)

1. Original : pas d'indication rythmique
2. Original : indication rythmique de noire
3. Original : pas d'indication rythmique

# Menuet

3  
4

4

8

13

17

21

1. Original : Sol (c sur la chanterelle)



# Gavotte

Handwritten musical score for Gavotte, measures 1-18. The score is written on a single staff with a treble clef and a common time signature (C). It features various rhythmic values (quarter, eighth, sixteenth notes) and rests. Fingerings are indicated by numbers 1-4. Ornaments are shown as small 'a' characters above notes. Measure numbers 4, 8, 11, 15, and 18 are placed at the beginning of their respective lines. A repeat sign with a double bar line and a decorative flourish is at the end of measure 18. A small box with the letter 'R' is located below measure 18.

1. Original : ornament absent

# Gigue (Guigue)

4

9

12

17

20

1. Original : indication rythmique de croche pointée

23

ff

R

27

4 (1\*)

4 (2\*)

30

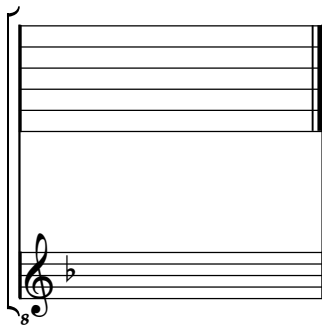
4

1. Original : indication rythmique de noire  
 2. Original : pas d'indication rythmique

# Tonalité : Fa majeur

*Accord ordinaire des basses du luth*

*Scordature par octave*



*Accord des 11 chœurs du luth*

The image shows a musical staff with six lines, representing the six strings of a lute. The bottom line (the lowest string) has a treble clef with an '8' below it, indicating an octave shift. The staff contains a sequence of notes: a, a, a, a, a, a, a, a, a, a, a. The notes are written in a scordature style, with some notes being beamed together. The notes are in F major (one flat).