

Wolff Jacob Lauffensteiner

(avril 1676 - 26 mars 1754)

[Partie]

Ouverture Mr Lauffenstein, Allegro,
Air da Paissan, Courante (Cour), Bourrée (Bouree),
Sarabande, Menuet (Men:)

Ré majeur (Si mineur)

Luth baroque à 11 chœurs (avec scordature)

Manuscrit de Göttweig 1, A-GÖ1

Bibliothèque de l'abbaye bénédictine de Göttweig

Archives musicales

(A-GÖ ms. Lautentabulatur Nr. 1)

Folios 21r. à 22v. (+23r.)

*Voir dans le manuscrit de Kremsmünster A-KR77, folios 52v à 59r, [Partie]
en Ré majeur. [A-KR77_53]*



Ouverture

4

7

10

Allegro

14

18

22

25

a *ra* *ra* *ra* *ra* *ra* *ra* *ra*

29

ra *ra* *ra* *ra* *ra* *ra* *ra* *ra*

4

33

ra *ra* *ra* *ra* *ra* *ra* *ra* *ra*

36

a *ra* *ra* *ra* *ra* *ra* *ra* *ra*

39

ra *ra* *ra* *ra* *ra* *ra* *ra* *ra*

42

a *ra* *ra* *ra* *ra* *ra* *ra* *ra*

45

ra *ra* *ra* *ra* *ra* *ra* *ra* *ra*

Air da Paissan

Musical score for "Air da Paissan" in C major, 3/4 time. The score consists of five systems of music, each with a vocal line and a piano accompaniment line. The vocal line features various note values and rests, while the piano line provides harmonic support with chords and arpeggios. The score includes a repeat sign at measure 12.

System 1: Measures 1-4. Vocal line: a quarter note, quarter note, eighth note, eighth note, quarter note, quarter note, eighth note, eighth note. Piano line: C4, G4, A4, A4, A4, A4, A4, A4.

System 2: Measures 5-8. Vocal line: quarter note, quarter note, eighth note, quarter note, eighth note, quarter note, eighth note, quarter note. Piano line: A4, G4, F4, E4, D4, C4, B3, A3.

System 3: Measures 9-12. Vocal line: quarter note, quarter note, eighth note, quarter note, eighth note, quarter note, eighth note, quarter note. Piano line: G4, F4, E4, D4, C4, B3, A3, G3.

System 4: Measures 13-16. Vocal line: quarter note, quarter note, eighth note, quarter note, eighth note, quarter note, eighth note, quarter note. Piano line: F4, E4, D4, C4, B3, A3, G3, F3.

System 5: Measures 17-20. Vocal line: quarter note, quarter note, eighth note, quarter note, eighth note, quarter note, eighth note, quarter note. Piano line: E4, D4, C4, B3, A3, G3, F3, E3.

20

Handwritten musical notation for measures 20-22. The staff contains notes with lyrics: *r a e e e a a a e*. Below the staff, there are handwritten notes: *a a a*.

23

Handwritten musical notation for measures 23-26. The staff contains notes with lyrics: *a e e e a a a a r a a e r r a e a*. Below the staff, there are handwritten notes: *a a a a a e a a/a*.

27

Handwritten musical notation for measures 27-30. The staff contains notes with lyrics: *r e r a e r a a e r a e a e*. Below the staff, there are handwritten notes: *a a a a a r a a a a*.

31

Handwritten musical notation for measures 31-33. The staff contains notes with lyrics: *r e r a e a a a a a a a a a*. Below the staff, there are handwritten notes: *a a a a a a a a*.

34

Handwritten musical notation for measures 34-36. The staff contains notes with lyrics: *a a a a a a a a*. Below the staff, there are handwritten notes: *a a a a a a a a*. The piece ends with a decorative flourish.

Courante (Cour)

Handwritten musical notation for the first system. It consists of two staves. The top staff has a treble clef and a 3/4 time signature. The bottom staff has a bass clef and a 4/4 time signature. The notation includes various rhythmic values (quarter, eighth, sixteenth notes) and rests, with some notes marked with a dot (pointed white note). The notes are written in a shorthand style using letters 'a', 'e', 'r', 'b', and 'r'.

Handwritten musical notation for the second system, starting at measure 4. It consists of two staves. The top staff has a treble clef and a 3/4 time signature. The bottom staff has a bass clef and a 4/4 time signature. The notation includes various rhythmic values and rests, with some notes marked with a dot.

Handwritten musical notation for the third system, starting at measure 8. It consists of two staves. The top staff has a treble clef and a 3/4 time signature. The bottom staff has a bass clef and a 4/4 time signature. The notation includes various rhythmic values and rests, with some notes marked with a dot.

Handwritten musical notation for the fourth system, starting at measure 12. It consists of two staves. The top staff has a treble clef and a 3/4 time signature. The bottom staff has a bass clef and a 4/4 time signature. The notation includes various rhythmic values and rests, with some notes marked with a dot.

Handwritten musical notation for the fifth system, starting at measure 16. It consists of two staves. The top staff has a treble clef and a 3/4 time signature. The bottom staff has a bass clef and a 4/4 time signature. The notation includes various rhythmic values and rests, with some notes marked with a dot. There are three asterisks below the staff: (1*) under the first measure, (2*) under the second measure, and 4 (3*) under the fourth measure.

1. Original : pas d'indication rythmique
 2. Original : indication rythmique de blanche pointée
 3. Original : Ré dièse (b sur le 5e chœur)

19

a r a a | e a r r r a e r | b a r a e a r | b a a b b r

a a a a a a a a

23

a r a a e | a r b b | r | a a f

a a a a a a a a

27

f a r a | b a r a | f a r a | e e a b | a a b a

a a a a a a a a

32

e e a b | a a b a | e a | f r a e | f a b

a a a a a a a a

37

b b b | a b b a | a a

a a a a a a a a

(*) a a a

Bourrée (Bouree)

Handwritten musical notation for the first system. It features a treble clef and a common time signature (C). The melody consists of several notes with stems and beams, including a triplet of eighth notes. The notes are labeled with letters 'a', 'e', 'r', and 'a'. There are also some handwritten annotations like 'm' and 'p' above the notes.

Handwritten musical notation for the second system, starting with a measure number '3'. The melody continues with notes labeled 'a', 'e', 'a', 'r', 'a', 'e'. There are repeat signs and a '4' at the end of the system, possibly indicating a measure rest or a specific tempo marking.

Handwritten musical notation for the third system, starting with a measure number '6'. It includes the instruction 'Fin: ⊕' above the staff. The melody features notes labeled 'e', 'a', 'r', 'e', 'r', 'a'. There are repeat signs and a '4' at the end of the system.

Handwritten musical notation for the fourth system, starting with a measure number '9'. The melody consists of notes labeled 'r', 'a', 'e', 'r', 'a', 'r', 'a', 'r'. There are repeat signs and a '4' at the end of the system.

Handwritten musical notation for the fifth system, starting with a measure number '12'. The melody includes notes labeled 'a', 'e', 'r', 'r', 'r', 'a', 'e', 'a', 'e', 'r', 'a', 'a'. There are repeat signs and a '4' at the end of the system.

15

Da Capo

⊕ Fin:

17

Sarabande

The image displays a handwritten musical score for a Sarabande in G major. The score is written on a grand staff with two systems of two staves each. The time signature is 3/4. The notation includes various rhythmic values (quarter, eighth, and sixteenth notes), rests, and dynamic markings such as *f* and *ff*. The piece is characterized by its slow tempo and features several complex rhythmic patterns, including triplets and sixteenth-note runs. The score is divided into measures, with measure numbers 4, 8, 13, and 17 indicated on the left side. The handwriting is in black ink on white paper.

20

$\text{e e r r' e r e r e}$
 e r a

4 (*)

24

e f* f
 a b b e

4

27

e r' a e r
 e e r' a

4

30

a e*r
 r a

4

Menuet (Men:)

Musical score for "Menuet (Men:)" in G major. The score is written on a single staff with letter-based notes (a, b, c, d, e, f, g) and includes rhythmic notation above the staff. The piece is in 3/4 time and consists of 24 measures.

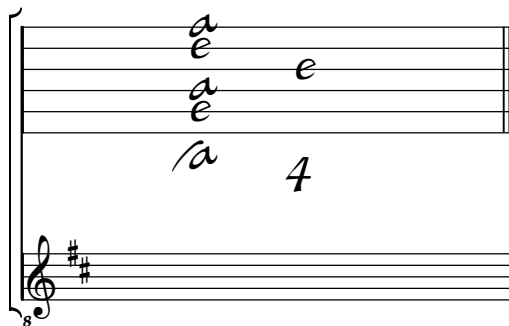
The score is divided into systems with measure numbers 5, 9, 14, 18, and 22. It includes various rhythmic markings such as "3/4", "4", and "triplets". The notes are written in a stylized, letter-based notation. The piece concludes with a decorative flourish.

1. Original : indication rythmique de noire

Tonalité : Ré majeur

Scordature du luth : 1, 4 et 9 = Fa dièse, 11 = Do dièse

Scordature par octave



Accord des 11 chœurs du luth



