

[Compositeur anonyme]

[Pièce sans titre]

Ré majeur

Luth baroque à 11 chœurs

Manuscrit de Göttweig 1, A-GÖ1

Bibliothèque de l'abbaye bénédictine de Göttweig

Archives musicales

(A-GÖ ms. Lautentabulatur Nr. 1)

Folio 20v.



3 4

f *mf* *mf* *mf*

5

mf *mf* *mf* *mf* *mf*

10

f *mf* *mf* *mf* *mf*

15

f *mf* *mf* *mf* *mf*

20

mf *mf* *mf* *mf* *mf*

(*)

25

mf *mf* *mf* *mf* *mf*

1. Original : Sol (f sur le canto)

30

Handwritten musical notation for measures 30-34. The top staff contains notes with stems and beams. The bottom staff contains notes with stems and beams. A double bar line with a repeat sign is below the first measure.

35

Handwritten musical notation for measures 35-39. The top staff contains notes with stems and beams. The bottom staff contains notes with stems and beams.

40

Handwritten musical notation for measures 40-44. The top staff contains notes with stems and beams. The bottom staff contains notes with stems and beams.

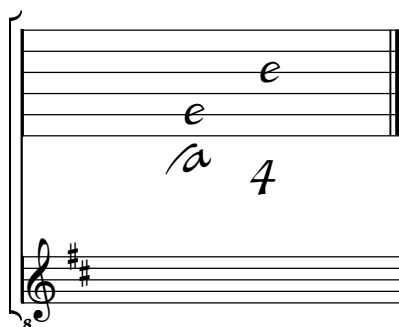
45

Handwritten musical notation for measures 45-49. The top staff contains notes with stems and beams. The bottom staff contains notes with stems and beams. A double bar line with a repeat sign is at the end of the system.

Tonalité : Ré majeur

Accord des basses du luth : 2 dièses

Scordature par octave



Accord des 11 chœurs du luth

The diagram shows a lute fretboard with six strings. The top string has a note 'a' on the 1st fret. The second string has a note 'a' on the 1st fret. The third string has a note 'a' on the 1st fret. The fourth string has a note 'a' on the 1st fret. The fifth string has a note 'a' on the 1st fret. The sixth string has a note 'a' on the 1st fret. The fretboard is labeled '4' at the end. Below the fretboard is a bass clef staff with a key signature of two sharps (F# and C#). The staff contains a sequence of notes: F#, C#, G, D, E, F#, G, A, B, C, D, E, F#.