

*François Dufaut ou Dufault*  
(avant 1604 - avant 1672)

# Courante

(Courente)

*M<sup>e</sup>. Douffau*

CLFDuf N°131

Ré majeur

*Luth baroque à 11 chœurs*

**Manuscrit de Göttweig 1, A-GÖ1**

*Bibliothèque de l'abbaye bénédictine de Göttweig*

*Archives musicales*

(A-GÖ ms. Lautentabulatur Nr. 1)

*Folio 20r.*



## Courante (Courente)

M<sup>e</sup>. Douffau

Musical score for Courante (Courente) by M. Douffau, CLFDuf N°131. The score is written for a lute with a 3/4 time signature. It consists of five systems of music, each with a treble and bass staff. The notes are written in a stylized, handwritten font. The first system starts with a 3/4 time signature and a treble clef. The second system starts with a 4/4 time signature and a bass clef. The third system starts with a 4/4 time signature and a treble clef. The fourth system starts with a 4/4 time signature and a bass clef. The fifth system starts with a 4/4 time signature and a treble clef. The score ends with a double bar line and repeat dots.

21

Handwritten musical notation for measures 21-24. Treble clef, 4/4 time. Notes: e e r e a | r e r a e | r r r r e | r g e f. Bass clef: a | a/a | a | r. Dynamics: a, a/a, a, 4.

25

Handwritten musical notation for measures 25-29. Treble clef, 4/4 time. Notes: e r e r a | r a e | a e | e e e | a a e. Bass clef: | | r | a e r | e. Dynamics: a, 4, a.

30

Handwritten musical notation for measures 30-33. Treble clef, 4/4 time. Notes: g g e f | e f e f e | e r e r r | e a e r a. Bass clef: a | a | a | a. Dynamics: a, a, a, a.

34

Handwritten musical notation for measures 34-37. Treble clef, 4/4 time. Notes: r r a e | e a r e | r r e r a | r e a r. Bass clef: a | r a | a | a. Dynamics: 4, a, a, a.

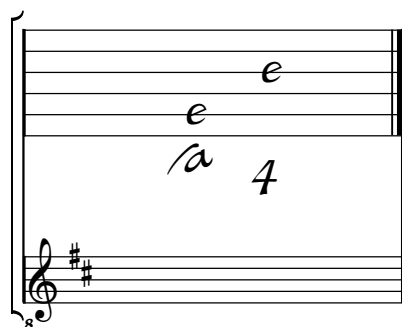
38

Handwritten musical notation for measures 38-40. Treble clef, 4/4 time. Notes: a r a e | g a | a. Bass clef: a | a f | e e a. Dynamics: a, a, f. Ends with a double bar line and a fermata.

# Tonalité : Ré majeur

*Accord des basses du luth : 2 dièses*

## *Scordature par octave*



## *Accord des 11 chœurs du luth*

