

[Compositeur anonyme]

Courante

Ré mineur

Luth baroque à 11 chœurs

Manuscrit de Göttweig 1, A-GÖ1

Bibliothèque de l'abbaye bénédictine de Göttweig

Archives musicales

(A-GÖ ms. Lautentabulatur Nr. 1)

Folio 17v



Courante

Handwritten musical notation for the first system of a Courante. It consists of two staves, a treble clef staff and a bass clef staff. The treble staff contains notes with rhythmic markings above them: a quarter note, a dotted quarter note, and an eighth note. The notes are 'e', 'r', 'a', 'e', 'a', 'a'. The bass staff contains notes 'a', 'a', 'a', 'a'. There are two '3' time signatures above the first two measures. A '4' is written below the first measure. A '3' is written below the second measure. A '1*' is written below the fourth measure. A '3' is written below the fifth measure.

Handwritten musical notation for the second system of a Courante. It consists of two staves. The treble staff contains notes with rhythmic markings above them: a quarter note, a dotted quarter note, and an eighth note. The notes are 'e', 'r', 'a', 'a', 'a', 'a'. The bass staff contains notes 'a', 'a', 'a', 'a', 'a', 'a'. There are two '3' time signatures above the first two measures. A '3' is written below the first measure. A '3' is written below the second measure. A '3' is written below the third measure. A '3' is written below the fourth measure. A '3' is written below the fifth measure.

Handwritten musical notation for the third system of a Courante. It consists of two staves. The treble staff contains notes with rhythmic markings above them: a quarter note, a dotted quarter note, and an eighth note. The notes are 'e', 'f', 'e', 'g', 'e', 'r', 'e', 'r', 'e', 'r', 'a', 'r', 'a', 'r', 'a', 'a', 'b', 'a', 'e', 'a'. The bass staff contains notes 'a', 'a', 'a', 'a'. There are two '3' time signatures above the first two measures. A '3' is written below the first measure. A '3' is written below the second measure. A '3' is written below the third measure. A '3' is written below the fourth measure. A '3' is written below the fifth measure.

Handwritten musical notation for the fourth system of a Courante. It consists of two staves. The treble staff contains notes with rhythmic markings above them: a quarter note, a dotted quarter note, and an eighth note. The notes are 'a', 'b', 'a', 'a', 'e', 'e', 'e', 'e', 'e', 'e', 'e', 'e', 'e', 'e', 'e', 'e', 'e', 'e'. The bass staff contains notes 'a', 'a', 'a', 'a', 'a', 'a', 'a', 'a', 'a'. There are two '3' time signatures above the first two measures. A '3' is written below the first measure. A '3' is written below the second measure. A '3' is written below the third measure. A '3' is written below the fourth measure. A '3' is written below the fifth measure.

Handwritten musical notation for the fifth system of a Courante. It consists of two staves. The treble staff contains notes with rhythmic markings above them: a quarter note, a dotted quarter note, and an eighth note. The notes are 'a', 'r', 'a', 'a', 'a', 'a', 'a', 'a', 'a', 'a', 'a', 'a', 'a', 'a'. The bass staff contains notes 'a', 'a', 'a', 'a', 'a', 'a', 'a', 'a'. There are two '3' time signatures above the first two measures. A '3' is written below the first measure. A '3' is written below the second measure. A '3' is written below the third measure. A '3' is written below the fourth measure. A '3' is written below the fifth measure.

Handwritten musical notation for the sixth system of a Courante. It consists of two staves. The treble staff contains notes with rhythmic markings above them: a quarter note, a dotted quarter note, and an eighth note. The notes are 'e', 'r', 'a', 'e', 'a', 'a', 'r', 'a', 'r', 'r', 'r', 'r', 'r', 'r'. The bass staff contains notes 'a', 'a', 'a', 'a', 'a', 'a', 'a', 'a'. There are two '3' time signatures above the first two measures. A '3' is written below the first measure. A '3' is written below the second measure. A '3' is written below the third measure. A '3' is written below the fourth measure. A '3' is written below the fifth measure.

1. Original : pas d'indication rythmique
2. Original : pas d'indication rythmique

25

a a e e a a/a

29

la la lla e a e

33

e a e a a a

37

a a a a

41

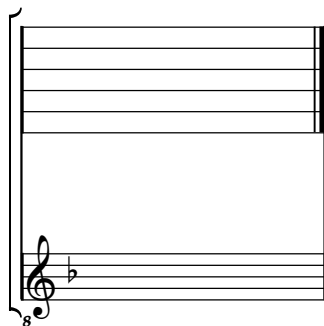
a la lla lla lla la a a lla

5 marzj 1736 :

Tonalité : Ré mineur

Accord ordinaire des basses du luth

Scordature par octave



Accord des 11 chœurs du luth

