

*[Compositeur anonyme]*

[6 pièces  
sans titre]

Ré mineur

*Luth baroque à 11 chœurs*

**Manuscrit de Göttweig 1, A-GÖ1**

*Bibliothèque de l'abbaye bénédictine de Göttweig*

*Archives musicales*

(A-GÖ ms. Lautentabulatur Nr. 1)

*Folios 14v - 17r*



4

8

12

16

20

24

1738: 9: August

1. Original : note absente

Handwritten musical score for a piece in Ré mineur, consisting of six systems of music. Each system is numbered on the left (4, 8, 12, 16, 20, 24). The notation includes a treble clef, a 3/4 time signature, and various rhythmic values (quarter, eighth, and sixteenth notes). The notes are written in a shorthand style, often with stems and flags, and are accompanied by a series of slurs and accents. The piece concludes with a double bar line and a decorative flourish.

4

8

12

16

20

24

19 Sept: 1736:

3 4

*a a a a a a a 4 a a*

4

*a b a a a a a a a a a e*

8

*a b b a a a a a a a a a*

12

*a a a a a a a e a a a a*

16

*a a a a 4 a a a a 4 a*

20

*a a a a 4 a a a a a a*

24

4 4 (1)

28

R

32

R

27 december 1736:

1. Tablature originale : pas d'indication de notes détachées

3 4

*k*<sub>h</sub><sub>e</sub> *i* *k* *i* *k* *h* *k* *k*<sub>h</sub> *k*\* *f* *h* *h*<sub>f</sub>

*a* *a* *a* *a* *a* *a*

4

*h*\* *f* *f* *f*\* *r* *e* *e* *e* *a* *r* *a* *r*\* *f* *f* *f*

*a* *a* 4 4 *a* *a* *a* *a*

8

*f*\* *r* *f* *a* *f* *e* *f* *e* *r* *r* *a* *a* *e* *a* *a* *e* *a* *r* *a* *e*

*a* *a* *a* *a* *a* *a*

12

*k*<sub>h</sub><sub>e</sub> *i* *k* *i* *k* *h* *k* *k*<sub>h</sub> *k*<sub>e</sub> *k*<sub>h</sub><sub>e</sub> *h* *i* *k*<sub>h</sub><sub>e</sub> *h* *i*

*a* *a* *a* *a* *a* *a*

15

*k* *k*<sub>h</sub><sub>e</sub> *k* *h* *i* *h* *i* *h*\* *i*\* *h*<sub>h</sub><sub>e</sub> *h*<sub>h</sub><sub>e</sub>

*a* *a* *a* *a* *a* *a*

19

*h*<sub>h</sub><sub>e</sub> *h*<sub>h</sub><sub>e</sub> *h*<sub>h</sub><sub>e</sub> *h* *h* *h* *h* *f* *f* *f* *f* *f* *e* *a* *e* *a*

4 4 *a* *a* *a* *a* *a* *a*

23

Handwritten musical notation for measures 23-26. The upper staff contains notes: e, a, f; e, a, f; e, f; e, a, f. The lower staff contains the letter 'a' repeated six times.

27

Handwritten musical notation for measures 27-29. The upper staff contains notes: e, a, e, a, f, e; k, h, k, h; k, h, k, h. The lower staff contains the letter 'a' repeated four times.

30

Handwritten musical notation for measures 30-32. The upper staff contains notes: k, h, k, h; k, h, k, h; k, f, G. The lower staff contains the letter 'a' repeated six times.

31 december 1736:

3 *m m* *ŋ* *ŋ* *a* *r* *ø* *r* *a* *r* *a* *e* *a* | *f* *e* *f* *e* *f* *a*

4 *ŋ* *ŋ* *a* *a* *a* *a*

3 *ŋ* *m* *ŋ* *ŋ* *a* *r* | *e* *r* *ø* *r* *e* | *a* *ø* *b*

4 *ŋ* *ŋ* *a* *a* *b* *a* *a*

6 *ŋ* *m* *ŋ* *ŋ* *a* *ø* *b* | *a* *ø* *b* | *a* *r* *a* *b* *ø*

*a* *a* *a* *b* *a* *a* *a* *a* *a*

(1\*) (2\*)

9 *ŋ* *a* *r* | *a* *a* | *m m* *a* *r* *e* *r* *a* *ŋ* *h* *f* *h* *f*

4 *a* *a* *a* *a*

12 *ŋ* *h* *f* *h* *f* *a* | *a* *a* *ø* *a* *b* *a* | *a* *r* *a* *b* *a* *ø* *a*

*a* *b* *a* *a* *a* *a* *a* *a* *a*

(3\*)

15 *ŋ* *a* *a* *ø* *a* *b* *a* | *a* *r* *a* *b* *a* *ø* *a* | *a* *a* *a* *b* *r* *r*

*b* *a* *a* *a* *a* *a* *a* *a* *a* *a*

(4\*)

1. Original : pas d'indication rythmique
2. Original : pas d'indication rythmique
3. Original : pas d'indication rythmique
4. Original : pas d'indication rythmique



18

Handwritten musical notation for measures 18-20. Measure 18: Treble clef, notes e, a, r, a. Bass clef, notes a, e. Measure 19: Treble clef, notes a, r, a, r, a, a. Bass clef, notes a, r, a. Measure 20: Treble clef, notes e, e, e, a, a. Bass clef, notes a, a, a.

21

Handwritten musical notation for measures 21-22. Measure 21: Treble clef, notes r, f, e. Bass clef, notes a, r. Measure 22: Treble clef, notes a, a, a, a. Bass clef, notes a, a, a, a. Ends with a double bar line and a fermata.

19 december 1736 :

3 *a* *r* *o* *o* *r* *a* *e*, | *a* *a* *r* | *a* *r* *o* *o* *r* *a* *e*, |

4 | | | | | |

*a* *a* *a* *a* *a* *a*

4 | *a* *a* *b* *o* *a* | *b*, *a* *b* *b* | *b* *r* *r* *r* *b*

*a* *a* *a* *a* *a* *a*

7 | *a*, *r* *a* *a* | *a* *a* *a* *a* *a* | *r* *a* *r* *r*

*a* *a* *a* *a* *a* *a*

10 | *a* *r* *r* *r* *a* | *a* *a* *a* *a* *a* *a* | *e* *r* *e* *r* *e*

*e* *a* *a*

13 | *a* *a* *a* *a* *a* | *e* *r* *e* *r* *e* | *a* *a* *a* *a* | *e* *r* *e* | *e*

*a* *a* *a* *a* *a*

17 | *e* *e* *r* *o* *r*, | *o* *o* *r* | *e* *e* *r* *o* *r*, |

*a* *a* *a* *a* *a* *a*

20 | *o* *o* *o* | *b* *a* *a* *a* *b* | *o* *o* *e* *o* *o* |

*a* *a*

23

a a 4

26

4 4 4

29

4 4 4

32

4 (1\*) a a

Da Capo

⊕Fin : 34

a a a a a a

37

a a

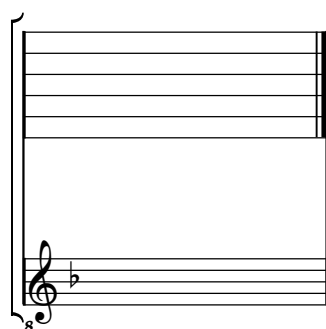
23 junj 1736 :

1. Tablature originale : pas d'indication rythmique dans la mesure

# Tonalité : Ré mineur

*Accord ordinaire des basses du luth*

*Scordature par octave*



*Accord des 11 chœurs du luth*

