

*Compositeur anonyme
(Silvius Leopold Weiss ?)*

[Partie]

Entrée (Entrée), [Presto], Menuet, Trio, Aria

La majeur

Manuscrits n° 1 de Götting : A-GÖ1

Bibliothèque de l'abbaye bénédictine de Götting, archives musicales

A-GÖ ms. Lautentabulatur Nr. 1

Folios 46v - 49r

*Voir dans le manuscrit de Varsovie PL-Wu2003, folios 10v à 11v : [Partie]
[PLWu2003_3]*

*Voir dans le manuscrit de Varsovie PL-Wu2005, pages 116 à 118 : [Partie]
[PLWu2005_41]*



Entrée (Entrée)

Handwritten musical score for a piece titled "Entrée (Entrée)". The score is written on a grand staff (treble and bass clefs) in common time (C). The notation includes rhythmic values (quarter, eighth, sixteenth notes), accidentals, and dynamic markings such as *ff* and *f*. The piece is divided into measures, with measure numbers 4, 8, 12, 16, and 20 indicated on the left side of the staves.

The score consists of the following measures:

- Measures 1-3: Treble clef, common time. Notes: \dot{e} , \dot{e} , \dot{e} , \dot{e} , \dot{e} , \dot{e} , \dot{e} , \dot{e} , \dot{e} , \dot{e} . Bass clef: a , a , a , a , a , a , a , a , a , a .
- Measures 4-7: Treble clef, common time. Notes: \dot{e} , \dot{e} , \dot{e} , \dot{e} , \dot{e} , \dot{e} , \dot{e} , \dot{e} , \dot{e} , \dot{e} . Bass clef: a , a , a , a , a , a , a , a , a , a .
- Measures 8-11: Treble clef, common time. Notes: \dot{e} , \dot{e} , \dot{e} , \dot{e} , \dot{e} , \dot{e} , \dot{e} , \dot{e} , \dot{e} , \dot{e} . Bass clef: a , a , a , a , a , a , a , a , a , a .
- Measures 12-15: Treble clef, common time. Notes: \dot{e} , \dot{e} , \dot{e} , \dot{e} , \dot{e} , \dot{e} , \dot{e} , \dot{e} , \dot{e} , \dot{e} . Bass clef: a , a , a , a , a , a , a , a , a , a .
- Measures 16-19: Treble clef, common time. Notes: \dot{e} , \dot{e} , \dot{e} , \dot{e} , \dot{e} , \dot{e} , \dot{e} , \dot{e} , \dot{e} , \dot{e} . Bass clef: a , a , a , a , a , a , a , a , a , a .
- Measures 20-23: Treble clef, common time. Notes: \dot{e} , \dot{e} , \dot{e} , \dot{e} , \dot{e} , \dot{e} , \dot{e} , \dot{e} , \dot{e} , \dot{e} . Bass clef: a , a , a , a , a , a , a , a , a , a .

24

f

28

32

36

R

40

[Presto]

6

11

16

21

26

(1*)

1. Original : 2 mesures absentes mais qui figurent dans les manuscrits de Varsovie

31

a *a* *a* *a* *a*

R

36

a *a* *a* *a* *4* *a*

41

a *a*

Menuet

3

6

12

17

24

29

34

Trio

Musical notation system 1 (measures 1-5):

Musical notation system 2 (measures 6-10):

Musical notation system 3 (measures 11-16):

Musical notation system 4 (measures 17-22):

Musical notation system 5 (measures 23-27):

Musical notation system 6 (measures 28-32):

R

1. Original : pas d'indication rythmique

Aria

1 2 3 4 5 6 7 8

2/4

4

5 6 7 8 9 10 11 12

5

13 14 15 16 17 18

11

19 20 21 22 23 24

17

25 26 27 28 29 30

23

31 32 33 34 35 36

29

35

4 4 4 4 4 a

41

4 4 4 4 a

46

4 4 4 4 a a a

51

a a a a a

56

4 a a a a

R

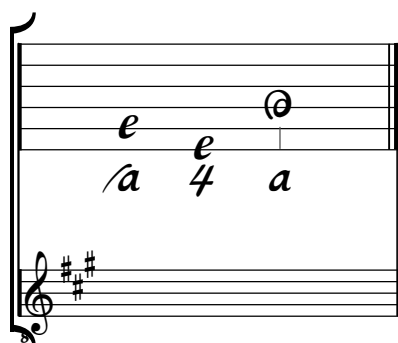
61

4 a a a

Tonalité : La majeur

Accord des basses du luth : 3 dièses

Scordature par octave



Accord des 11 chœurs du luth

