

Friedrich Wilhelm Raschke

(1706 - 1762)

Ballet di Raschke

G^d. Ballet di Raschke, C^d. Ballet di R

Sol majeur, Do majeur

Manuscrit de Cracovie PL-Kj40633

Kraków, Biblioteka Jagiellońska

PL-Kj ms. mus. 40633 (olim: Berlin)

Folios 36r & 36v



G^d. Ballet di Raschke

♩
♩
♩
♩
♩
♩
♩
♩
♩
♩

4

8

13

18

23

1. DC.

(*)

1. Original : Fa bécarré (a sur le 4e chœur) 2x

C^d. Ballet di R

♩ ♩ ♩ ♩ ♩ ♩ ♩ ♩ ♩
 2 a a a r a a r a r e a r a
 4 F F
 4 5 4 a a a

4 ♩ ♩ ♩ ♩ ♩ ♩ ♩
 r a a a a r a r r a a a a r a a
 a a a a a a a a

9 ♩ ♩ ♩ ♩ ♩ ♩ ♩
 a a e a r a r a a a a a r a a r a a
 a a a a a a a

13 ♩ ♩ ♩ ♩ ♩ ♩ ♩
 a a e a a a a h h h f e e f h a a
 4 4 5 a 6 4 a a

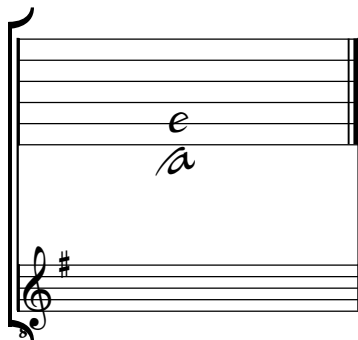
18 ♩ ♩ ♩ ♩ ♩ ♩ ♩
 h h h f g f e e f h h h f g f e e f m l k h k k h f
 a a a a a a a a 4 5

23 ♩ ♩ ♩ ♩ ♩ ♩ ♩
 h h f e f h g e r 1. r a 2. r a DC.
 6 a 4 a a a a a a a

Tonalité : Sol majeur

Accord des basses du luth : 1 dièse

Scordature par octave



Accord des 13 chœurs du luth

Musical notation for the 13 chords of the lute. It consists of two staves. The upper staff is a six-line staff with a brace on the left side. The letter 'a' is written on the first line of the staff, and the letter 'a' is written on the second line of the staff. The lower staff is a five-line staff with a treble clef and a sharp sign (#) on the first line. The notation is enclosed in a large bracket on the left side.