

*[Compositeur anonyme]*

# Bourrée

La mineur

Manuscrit de Cracovie PL-Kj40633

*Kraków, Biblioteka Jagiellońska*

PL-Kj ms. mus. 40633 (olim: Berlin)

*Folio 27v*



# Bourrée

Musical notation for the first system of the Bourrée. It consists of a single staff with a treble clef and a common time signature (C). The melody is written in a simple, rhythmic style. The notes are: quarter, quarter, eighth, eighth, quarter, quarter, quarter, eighth, eighth, quarter. The notes are: r, a, r, a, a, r, a, r, a, a. The notes are: a, b, a, a, a, 4, a, a.

Musical notation for the second system of the Bourrée. It consists of a single staff with a treble clef and a common time signature (C). The melody is written in a simple, rhythmic style. The notes are: quarter, eighth, eighth, quarter, quarter, quarter, quarter, eighth, eighth, quarter. The notes are: a, a, a, r, a, a, r, a, e, a, a, r, a. The notes are: a, a, a, a, a, a, a, a.

Musical notation for the third system of the Bourrée. It consists of a single staff with a treble clef and a common time signature (C). The melody is written in a simple, rhythmic style. The notes are: quarter, quarter, quarter, eighth, eighth, quarter, quarter. The notes are: a, a, a, r, a, r, a, a, a, a, r, r, a. The notes are: 4, 4, a, a, b.

Musical notation for the fourth system of the Bourrée. It consists of a single staff with a treble clef and a common time signature (C). The melody is written in a simple, rhythmic style. The notes are: quarter, quarter, eighth, eighth, quarter, quarter, quarter, eighth, eighth, quarter. The notes are: a, r, r, a, a, r, r, r, r, e, r, a, a, a, r, a, r, a. The notes are: a, a, a, a, a, a, e, a, a, r, a, a, r.

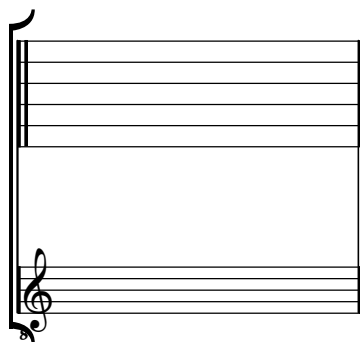
Ⓜ

Musical notation for the fifth system of the Bourrée. It consists of a single staff with a treble clef and a common time signature (C). The melody is written in a simple, rhythmic style. The notes are: eighth, eighth, quarter, quarter, quarter, quarter, quarter. The notes are: a, r, a, a, a, a, a, e, r, a, e. The notes are: a, a, a, a, r, a, e. The system ends with a decorative flourish.

# Tonalité : La mineur

*Accord ordinaire du luth*

*Scordature par octave*



*Accord des 11 chœurs du luth*



