

[Compositeur anonyme]

Courante (Courrante)

La mineur

Manuscrit de Cracovie PL-Kj40633

Kraków, Biblioteka Jagiellońska

PL-Kj ms. mus. 40633 (olim: Berlin)

Folios 20v & 21r



Courante (Courrante)

3

4

8

12

16

20

Handwritten musical notation for measures 20-23. Measure 20: a, a, r, a. Measure 21: a, a, r, e, r. Measure 22: e, r, e. Measure 23: e, a, e, f, e. Time signatures: 4, 4, 4, and a repeat sign.

24

Handwritten musical notation for measures 24-27. Measure 24: r, r, e. Measure 25: r, a, r. Measure 26: a, a, r. Measure 27: r, a, r. Time signatures: 4, a repeat sign, a, and 6.

28

Handwritten musical notation for measures 28-31. Measure 28: a, a. Measure 29: a, r. Measure 30: r, e, r, a, r. Measure 31: a, a. Time signatures: a repeat sign, a, 4, and a repeat sign.

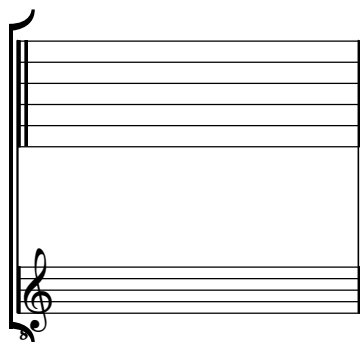
32

Handwritten musical notation for measures 32-35. Measure 32: a, r, a, r. Measure 33: a, r, a. Measure 34: a, r, a. Measure 35: a, e. Ends with a repeat sign and a decorative flourish.

Tonalité : La mineur

Accord ordinaire du luth

Scordature par octave



Accord des 11 chœurs du luth

