

[Compositeur anonyme]

Gigue

La mineur

Manuscrit de Cracovie PL-Kj40633

Kraków, Biblioteka Jagiellońska

PL-Kj ms. mus. 40633 (olim: Berlin)

Folios 19r à 20r



Gigue

Handwritten musical score for a Gigue in La mineur. The score is written on a grand staff with a 3/8 time signature. The notation includes various rhythmic values such as eighth notes, quarter notes, and half notes, along with rests and accidentals. The piece is divided into measures, with measure numbers 6, 12, 18, 24, and 30 indicated on the left. The score concludes with a double bar line and repeat signs.

Measures 1-5:
 Treble clef: $\text{e} \text{g}$ | $\text{e} \text{r}$ | r | r | $\text{e} \text{g}$
 Bass clef: a | r | $\text{a} \text{r} \text{a}$ | $\text{r} \text{e} \text{a}$ | a

Measures 6-11:
 Treble clef: $\text{e} \text{r}$ | r | $\text{e} \text{g} \text{h}$ | $\text{g} \text{h}$ | $\text{e} \text{e} \text{a}$
 Bass clef: r | $\text{a} \text{r} \text{a}$ | $\text{r} \text{e} \text{a}$ | a | a | a

Measures 12-17:
 Treble clef: $\text{r} \text{r}$ | $\text{g} \text{r} \text{r}$ | $\text{a} \text{a} \text{f}$ | $\text{a} \text{r}$ | $\text{r} \text{a} \text{r}$ | r
 Bass clef: a | a | 4 | a | a | $\text{r} \text{a} \text{a}$

Measures 18-23:
 Treble clef: $\text{r} \text{h} \text{f}$ | $\text{e} \text{f} \text{e}$ | $\text{a} \text{r} \text{a}$
 Bass clef: $\text{a} \text{a} \text{r}$ | $\text{a} \text{r} \text{a}$ | $\text{a} \text{a} \text{a}$ | a | a | a

Measures 24-29:
 Treble clef: a | $\text{r} \text{e} \text{r}$ | $\text{a} \text{r}$ | $\text{a} \text{a} \text{r}$ | $\text{a} \text{a}$ | $\text{F} \text{F}$
 Bass clef: a | a | a | a | 4 | a

Measures 30-35:
 Treble clef: $\text{r} \text{a} \text{r}$ | r | $\text{F} \text{F}$ | $\text{a} \text{a} \text{r}$ | r
 Bass clef: r | $\text{r} \text{a} \text{a}$ | $\text{a} \text{a} \text{r}$ | a | r | $\text{r} \text{a} \text{a}$

36

r a r e r a r a e r e

a a r a e a a e

43

e r e r e

a r e a e a r e a r e

49

e r r r r r r r

r r r r r r r e r a

56

a a a a a a a a

a a a a a a a a r a a a r a

62

a a a r a r a r e r

r a a r a r a r e r

68

r r a F e r r r a r e r

e r a e a e r a r e r

74

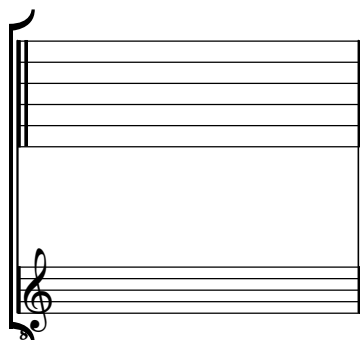
e g h g r e a e g h r e a e

a a a a a a a a

Tonalité : La mineur

Accord ordinaire du luth

Scordature par octave



Accord des 11 chœurs du luth

