

*[Compositeur anonyme]*

# Prélude (Prelude)

La mineur

Manuscrit de Cracovie PL-Kj40633

*Kraków, Biblioteka Jagiellońska*

PL-Kj ms. mus. 40633 (olim: Berlin)

*Folio 1r*



# Prélude (Prelude)

Handwritten musical notation for the first line of the piece. It consists of a treble clef, a common time signature (C), and a series of notes and rests on a five-line staff. Below the staff, there are handwritten letters 'a' and 'r' indicating fingerings or articulation. The notes are: e, f, a, f, e, f, e, e, f, f, a, a, a, a, f, r.

Handwritten musical notation for the second line of the piece, starting with a measure rest '3'. It consists of a treble clef, a common time signature (C), and a series of notes and rests on a five-line staff. Below the staff, there are handwritten letters 'a' and 'r' indicating fingerings or articulation. The notes are: f, a, a, a, f, f, a, f, a, f, f, f, a, e, a, a.

Handwritten musical notation for the third line of the piece, starting with a measure rest '5'. It consists of a treble clef, a common time signature (C), and a series of notes and rests on a five-line staff. Below the staff, there are handwritten letters 'a' and 'r' indicating fingerings or articulation. The notes are: e, e, r, e, a, a, a, a, r, r, a, a, f.

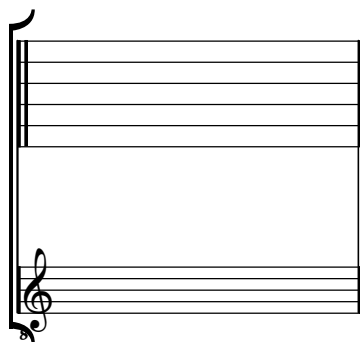
Handwritten musical notation for the fourth line of the piece, starting with a measure rest '7'. It consists of a treble clef, a common time signature (C), and a series of notes and rests on a five-line staff. Below the staff, there are handwritten letters 'a' and 'r' indicating fingerings or articulation. The notes are: (e r), (e r), a, e, r, a, r, a, r, a, r, a.

Handwritten musical notation for the fifth line of the piece, starting with a measure rest '9'. It consists of a treble clef, a common time signature (C), and a series of notes and rests on a five-line staff. Below the staff, there are handwritten letters 'a' and 'r' indicating fingerings or articulation. The notes are: r, a, r, a, r, a, r, a. The piece ends with a double bar line and a decorative flourish.

# Tonalité : La mineur

*Accord ordinaire du luth*

*Scordature par octave*



*Accord des 11 chœurs du luth*



