

*[Compositeur anonyme]*

# [3 pièces]

Bourrée (Boureè), Sarabande, Gigue (Guigue)

Ré mineur

Manuscrit de Bruxelles B-Bc15

*Bibliothèque du Conservatoire Royal de Musique de Bruxelles*

B-Bc Ms. Littera S. N° 15.132

*Pages 15 à 17*



# Bourrée (Bouree)

Handwritten musical score for Bourrée (Bouree) in C major, 3/4 time. The score consists of six systems of music, each with a treble clef and a common time signature 'C'. The notation includes notes, rests, and ornaments, with a 'C' time signature at the beginning of the first system. The piece concludes with a repeat sign and a decorative flourish.

5

10

16

21

27

R

# Sarabande

3 4

5 4

5

5 5 5 4 a

9

a a a 4 a a

13

4 a a a a a

17

a a a a a

21

a a a a a

# Gigue (Guigue)

♩
♩
♩
♩
♩
♩
♩
♩
♩
♩

6
a
a
r
a
r
a
a
e
a
r
a
a
6
a
6
a

a
a
a
a
a
a
a
a
a
a
a
a
a
a
a
a
a

4

♩
♩
♩
♩
♩
♩
♩
♩
♩
♩
♩
♩
♩
♩
♩
♩
♩

a
r
a
a
a
r
a
r
r
r
a
r
a
a
a
r
a
a
a
a

a
a
a
a
a
a
a
a
a
a
a
a
a
a
a
a
a

8

♩
♩
♩
♩
♩
♩
♩
♩
♩
♩
♩
♩
♩
♩
♩
♩
♩

a
e
a
e
a
e
a
e
a
e
a
e
a
e
a
e
a
e
a
e

a
a
a
a
a
a
a
a
a
a
a
a
a
a
a
a
a

12

♩
♩
♩
♩
♩
♩
♩
♩
♩
♩
♩
♩
♩
♩
♩
♩
♩

a
r
a
a
a
a
a
a
a
a
a
a
a
a
a
a
a

a
a
a
a
a
a
a
a
a
a
a
a
a
a
a
a
a

16

♩
♩
♩
♩
♩
♩
♩
♩
♩
♩
♩
♩
♩
♩
♩
♩
♩

a
r
a
a
a
r
e
a
r
e
r
a
r
e
r
a
r
e
r
a

a
a
a
a
a
a
a
a
a
a
a
a
a
a
a
a
a

20

♩
♩
♩
♩
♩
♩
♩
♩
♩
♩
♩
♩
♩
♩
♩
♩
♩

e
r
e
a
a
a
a
a
a
a
a
a
a
a
a
a
a

a
a
a
a
a
a
a
a
a
a
a
a
a
a
a
a
a

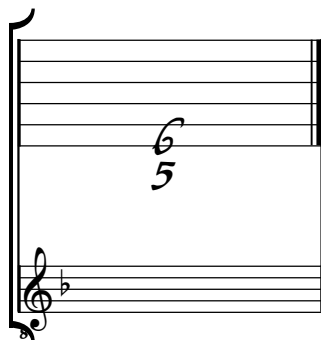
R

1. Original : pas d'indication rythmique

Tonalité : Ré mineur

*Accord du luth : 1 bémol*

*Scordature par octave*



*Accord des 12 chœurs du luth*

A musical staff with a treble clef and a flat key signature. The staff contains a sequence of notes and fingerings. The notes are: G4, A4, B4, C5, D5, E5, F5, G5, A5, B5, C6, D6. The fingerings are: a, a, a, a, a, a, a, a, a, a, a, a, 4, 5. The notes are written in a sequence that spans two octaves, with the final notes (4, 5) written below the staff.

