

[Compositeur anonyme]

[Partie en duo] pour gallichons

Allemande, Menuet (Men:), Allemande (All:),
Menuet (Men:), Gigue (Guigue)

instruments séparés

Fa majeur

Manuscrit de Bruxelles B-Bc15

Bibliothèque du Conservatoire Royal de Musique de Bruxelles

B-Bc Ms. Littera S. N° 15.132

Pages 91 à 98



[Partie en duo pour gallichons]

Gallichona 1^{ma}.
d' - a - f - c - G - F

Allemande

♪ ♪ ♪ ♪ ♪ ♪ ♪

2 4

6 ♪ ♪ ♪ ♪ ♪ ♪

⊕ ⊕

12 ♪ ♪ ♪ ♪ ♪ fin :

17 ♪ ♪ ♪ ♪ ♪

22 ♪ ♪ ♪ ♪ ♪

27 ♪ ♪ ♪ ♪

Da Capo
al segno

Menuet (Men:)

♪ ♪ ♪ ♪ ♪ ♪

5 ♪ ♪ ♪ ♪ ♪ ♪

10 ♪ ♪ ♪ ♪ ♪ ♪

15 ♪ ♪ ♪ ♪ ♪ ♪

20 ♪ ♪ ♪ ♪ ♪ ♪

Allemande (All:)

2

3

6

9

13

Menuet (Men:)

Da Capo

Gigue (Guigue)

Measures 1-3 of the Gigue (Guigue). The notation is for two staves. The first staff has a treble clef and a 6/8 time signature. The second staff has a bass clef. The notes are:
 Measure 1: Treble: a, r, a, a, b; Bass: a, r, a.
 Measure 2: Treble: a, b, a, a, a; Bass: a.
 Measure 3: Treble: a, b, a, a, a; Bass: a, r, r, a.

Measures 4-6 of the Gigue (Guigue). The notation is for two staves. The first staff has a treble clef and a 6/8 time signature. The second staff has a bass clef. The notes are:
 Measure 4: Treble: a, r, a, e; Bass: a.
 Measure 5: Treble: e, e, e, e; Bass: a.
 Measure 6: Treble: f, a, f, f, a, f; Bass: a.

Measures 7-10 of the Gigue (Guigue). The notation is for two staves. The first staff has a treble clef and a 6/8 time signature. The second staff has a bass clef. The notes are:
 Measure 7: Treble: e, e, e, e; Bass: a.
 Measure 8: Treble: f, a, f, f, a, f; Bass: a.
 Measure 9: Treble: a, a, r, a, e; Bass: a.
 Measure 10: Treble: a, a, r, a; Bass: a. The piece ends with a double bar line and repeat dots.

Measures 11-13 of the Gigue (Guigue). The notation is for two staves. The first staff has a treble clef and a 6/8 time signature. The second staff has a bass clef. The notes are:
 Measure 11: Treble: a, a, a, a; Bass: a.
 Measure 12: Treble: a, r, a, f; Bass: a.
 Measure 13: Treble: r, a, f, f, a, r; Bass: a.

Measures 14-17 of the Gigue (Guigue). The notation is for two staves. The first staff has a treble clef and a 6/8 time signature. The second staff has a bass clef. The notes are:
 Measure 14: Treble: r, a, r, f; Bass: a.
 Measure 15: Treble: f, f, f, f; Bass: a.
 Measure 16: Treble: f, f, f, f; Bass: a.
 Measure 17: Treble: f, f, f, f; Bass: a.

Measures 18-20 of the Gigue (Guigue). The notation is for two staves. The first staff has a treble clef and a 6/8 time signature. The second staff has a bass clef. The notes are:
 Measure 18: Treble: f, f, f, f; Bass: a.
 Measure 19: Treble: r, a, a, r; Bass: a.
 Measure 20: Treble: a, r, e, a; Bass: a. The piece ends with a double bar line and repeat dots.

Da Capo

[Partie en duo pour gallichons]

Gallichona 2^{da}.
d' - a - f - c - G - F

Allemande

1 2 3 4 5

6 7 8 9 10 11

12 13 14 15 16

17 18 19 20 21

22 23 24 25 26

27 28 29 30

Da Capo
al segno

Menuet (Men:)

3

5

10

15

20

Allemande (All:)

♩
♩
♩
♩
♩
♩
♩

4
♩
♩
♩
♩
♩
♩
♩

7
♩
♩
♩
♩
♩
♩
♩

11
♩
♩
♩
♩
♩
♩
♩

15
♩
♩
♩
♩
♩
♩
♩

Menuet (Men:)

3

5

10

15

20

25

Da Capo

Gigue (Guigue)

♪ ♪ ♪ ♪ ♪ ♪ ♪ ♪ ♪ ♪

6 a b a b r | a r a a r a | a r a a a | e a r a a

8 a | a a | a a | a a

5 ♪ ♪ ♪ ♪ ♪ ♪ ♪ ♪

a a a a | a a | a a a a | a a

a a | a a | a a | a a

9 ♪ ♪ ♪ ♪ fin : ♪ ♪

a a r | a a | a a a a a | e a r e a r

a a | a a | a a | a a

13 ♪ ♪ ♪ ♪

a r r a a | r a r a r r | r a r a | a r a r

a | a a | a a | a a

17 ♪ ♪ ♪ ♪ ♪ ♪

r a r a | a r a r | a r a | r a a

a a | a a | a e | a a

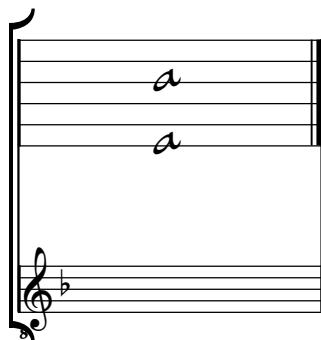
Da Capo

(1*)

1. Original : pas de points de reprise sur la barre de fin

Tonalité : Fa majeur

Scordature par octave



Accord des 12 chœurs du luth

