

*[Compositeur anonyme]*

# [Partie]

Allemande, Courante (Courente), Aria,  
Menuet, Spagnioletta, Menuet

Ré mineur

**Manuscrit de Bruxelles B-Bc15**

*Bibliothèque du Conservatoire Royal de Musique de Bruxelles*

B-Bc Ms. Littera S. N° 15.132

*Pages 2 à 6*

*Voir dans le manuscrit de Grüssau PLWu2004, folio 46r : Menuet  
(PLWu2004\_13)*



# Allemande

Handwritten musical score for Allemande in G minor. The score is written on a single staff with a common time signature (C) and a treble clef. The notation includes various notes, rests, and ornaments. The piece is divided into measures, with measure numbers 1, 3, 7, 11, 15, and 18 indicated. The score concludes with a double bar line and a repeat sign.

# Courante (Courente)

1

3 4

4

8

5 4

13

17

21

# Aria

Handwritten musical notation for the first system of an aria. It consists of two staves. The top staff has a common time signature 'C' and contains notes with lyrics 'a e a a' in the first measure, 'r a r a' in the second, and 'e e a r' in the third. The bottom staff contains lyrics 'a a a' in the first measure, 'e a a' in the second, and 'a a a a' in the third. Above the notes are various musical ornaments and slurs.

Handwritten musical notation for the second system, starting at measure 4. It consists of two staves. The top staff has notes with lyrics 'a a e a' in the first measure, 'e r e r' in the second, and 'a r a r' in the third. The bottom staff has lyrics 'a a' in the first measure, 'a a a 4' in the second, and 'a e a a' in the third. A double bar line with repeat dots is present between the first and second measures. Above the notes are various musical ornaments and slurs.

Handwritten musical notation for the third system, starting at measure 7. It consists of two staves. The top staff has notes with lyrics 'a e a a' in the first measure, 'r a e a' in the second, and 'a e a a' in the third. The bottom staff has lyrics 'a a a' in the first measure, 'a a a' in the second, and 'a a a' in the third. Above the notes are various musical ornaments and slurs.

Handwritten musical notation for the fourth system, starting at measure 10. It consists of two staves. The top staff has notes with lyrics 'r a r a' in the first measure, 'e e a r' in the second, and 'a a e a' in the third. The bottom staff has lyrics 'e a a' in the first measure, 'a a a a' in the second, and 'a a a' in the third. Above the notes are various musical ornaments and slurs. The system ends with a double bar line and a decorative flourish.

# Menuet

Musical notation for the first system (measures 1-3). The piece is in 3/4 time. The first staff shows notes: e, r, a, a, f, e, f, e. The second staff shows bass notes: a, a, a, a. Measure 1 contains a 3-measure rest in the first staff and a 4-measure rest in the second staff.

Musical notation for the second system (measures 4-7). The first staff shows notes: f, a, a, e, r, a, e, r, e, r, a, r. The second staff shows bass notes: a, a, a, a, a, a. Measure 4 contains a 4-measure rest in the first staff.

Musical notation for the third system (measures 8-12). The first staff shows notes: r, r, a, r, a, a, r, a, r, a, e, a, a. The second staff shows bass notes: a, a, a, a, a, a. A repeat sign is present at the beginning of measure 9.

Musical notation for the fourth system (measures 13-16). The first staff shows notes: r, a, r, a, e, e, a, r, a, a, e, a. The second staff shows bass notes: a, a, a, a, a, a. The system ends with a double bar line and a repeat sign.

# Spagnioletta

3 8  
 ♪ ♪ ♪ ♪ ♪ ♪ ♪ ♪  
 a a r a e r e r a r e a r e a

5  
 ♪ ♪ ♪ ♪ ♪ ♪ ♪ ♪  
 a a a r e a a r e a ♪ a e r

10  
 ♪ ♪ ♪ ♪ ♪ ♪ ♪ ♪  
 e r a r a r a a a a r a

14  
 ♪ ♪ ♪ ♪ ♪ ♪ ♪ ♪  
 a r a a r a a a a r

18  
 ♪ ♪ ♪ ♪ ♪ ♪ ♪ ♪  
 a e r e r a r e a a a a

22  
 ♪ ♪ ♪ ♪ ♪ ♪ ♪ ♪  
 r e a a r e ♪ a e r

# Menuet

3 4

*a r a e r e r a r a r a a*  
*a a a a a*

5

*a r a a r a a a a a a e*  
*a a a a a a a a a a a a*

10

*a r e f e f a a a e r r*  
*a a a a a a a a a a a a*

15

*a e r e f a r a r e r a a*  
*a a a a a a a a a a a a*

20

*a r a e r e r a r a r a a*  
*a a a a a a a a a a a a*

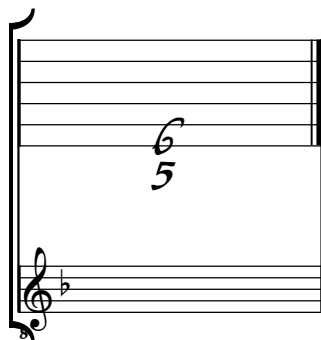
25

*a r a a r a a a a a a e*  
*a a a a a a a a a a a a*

Tonalité : Ré mineur

Accord du luth : 1 bémol

*Scordature par octave*



*Accord des 12 chœurs du luth*

