

[Compositeur anonyme]

[Concerto]

Adagio, Allegro, Adagio

Fa majeur & Ré mineur

Manuscrit de Bruxelles B-Bc15

Bibliothèque du Conservatoire Royal de Musique de Bruxelles

B-Bc Ms. Littera S. N° 15.132

Pages 58 à 62



16

4 a 4 a a a 4 a a a

19

4 a a a e a a a

22

a 4 a a

24

4 5 a a a a

26

a 5 4 a a a a a a

28

a a a a a a

30

4 4 a

23

Handwritten musical notation for measures 23-25. Measure 23: Treble clef, notes G4, A4, B4, A4, G4. Bass clef, notes A3, A3, A3, A3. Measure 24: Treble clef, notes G4, A4, B4, A4, G4. Bass clef, notes G3, E3. Measure 25: Treble clef, notes A4, B4, A4, G4, F4. Bass clef, notes A3, A3.

26

Handwritten musical notation for measures 26-28. Measure 26: Treble clef, notes A4, A4, G4, F4, E4. Bass clef, notes A3, G3. Measure 27: Treble clef, notes A4, G4, F4, E4, D4. Bass clef, notes G3, A3, B3, C4. Measure 28: Treble clef, notes F4, G4, A4, G4, F4. Bass clef, notes A3, A3.

29

Handwritten musical notation for measures 29-31. Measure 29: Treble clef, notes E4, D4, C4, B3, A3. Bass clef, notes A3, A3, A3. Measure 30: Treble clef, notes A4, G4, F4, E4, D4. Bass clef, notes A3, A3, A3. Measure 31: Treble clef, notes G4, A4, B4, A4, G4. Bass clef, notes A3, A3.

32

Handwritten musical notation for measures 32-34. Measure 32: Treble clef, notes G4, F4, E4, D4, C4. Bass clef, notes A3, A3, A3. Measure 33: Treble clef, notes D4, C4, B3, A3, G3. Bass clef, notes A3, A3, A3. Measure 34: Treble clef, notes C4, B3, A3, G3, F3. Bass clef, notes A3, A3, A3.

35

Handwritten musical notation for measures 35-38. Measure 35: Treble clef, notes A4, G4, F4, E4, D4. Bass clef, notes A3, A3. Measure 36: Treble clef, notes D4, C4, B3, A3, G3. Bass clef, notes A3, A3. Measure 37: Treble clef, notes A4, G4, F4, E4, D4. Bass clef, notes A3, A3. Measure 38: Treble clef, notes G4, F4, E4, D4, C4. Bass clef, notes A3, A3.

39

Handwritten musical notation for measures 39-42. Measure 39: Treble clef, notes A4, G4, F4, E4, D4. Bass clef, notes A3, A3. Measure 40: Treble clef, notes D4, C4, B3, A3, G3. Bass clef, notes A3, A3. Measure 41: Treble clef, notes A4, G4, F4, E4, D4. Bass clef, notes A3, A3. Measure 42: Treble clef, notes G4, F4, E4, D4, C4. Bass clef, notes A3, A3.

Adagio

Handwritten musical score for Adagio, measures 1-14. The score is written on a grand staff with treble and bass clefs. It includes various musical notations such as notes, rests, slurs, and dynamic markings like 'f' and 'ff'. The piece is in common time (C).

Measures 1-3: Treble clef, common time. Notes: a, a, a, e, r. Bass clef: a, a, a, e, a. Dynamic markings: *ff*, *ff*, *ff*.

Measures 4-6: Treble clef, common time. Notes: e, r, a, e, a, h, f, h, f, f, r, a, a, r, a, a, f, e, f, e. Bass clef: a, a, a, a, a, a, a, a, a, a, a, a. Dynamic markings: *f*, *f*, *f*, *f*, *f*, *f*, *f*, *f*.

Measures 7-9: Treble clef, common time. Notes: a, e, a, a, a, e, r, a, a, e, a, a. Bass clef: a, a, a, a, a, a, a, a, a, a, a, a. Dynamic markings: *ff*, *ff*, *ff*, *ff*, *ff*, *ff*, *ff*, *ff*.

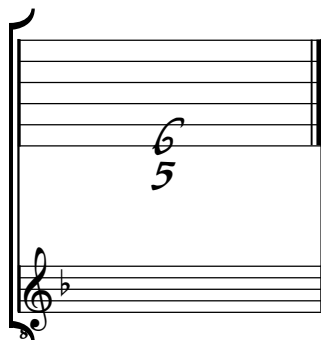
Measures 10-12: Treble clef, common time. Notes: a, f, e, f, f, a, e, e, e, r, e, a, a, r, r, a, r, f, e, f, e. Bass clef: a, a, a, a, a, a, a, a, a, a, a, a, a, a, a, a, a, a, a, a. Dynamic markings: *f*, *f*, *f*, *f*, *f*, *f*, *f*, *f*, *f*, *f*, *f*, *f*, *f*, *f*, *f*, *f*, *f*, *f*, *f*, *f*.

Measures 13-14: Treble clef, common time. Notes: a, a, a, a, a, a, r, a, a, a, a, a, a, a, a, a, a, a, a, a. Bass clef: a, a, a, a, a, a, a, a, a, a, a, a, a, a, a, a, a, a, a, a. Dynamic markings: *ff*, *ff*, *ff*, *ff*, *ff*, *ff*, *ff*, *ff*, *ff*, *ff*, *ff*, *ff*, *ff*, *ff*, *ff*, *ff*, *ff*, *ff*, *ff*, *ff*.

Tonalités : Fa majeur et Ré mineur

Accord du luth : 1 bémol

Scordature par octave



Accord des 12 chœurs du luth

A musical staff with a treble clef and a flat key signature. The staff is divided into two systems. The upper system consists of five lines with a brace on the left. The letters 'a' are written above the lines, indicating fingerings. The lower system consists of five lines with a treble clef and a flat key signature. The letters 'a' are written above the lines, and the numbers '4' and '5' are written below the lines, indicating fretting positions.

