

[Compositeur anonyme]

[Partie]

Ré majeur
Luth baroque à 11 chœurs

Manuscrit de Brno CZ-Bu103

Bibliothèque universitaire morave à Brno

Provenance : bibliothèque du comte Walldorf, Veselí nad Moravou

(CZ-Bu Ms. Ch. 103)

Folios 19v. à 22v.

Voir dans le manuscrit de Brno CZ-Bm371, page 26, Gavotte (Gavotta)
[CZBm371_16]



(22) Entrée

(Ré majeur)

1. Tablature originale : Sol (c sur le 4e chœur)

28

D r (e) r | G G r a r e | D r e f e r
 a a a a 4 a

31

G e r G | e G f | e e G e | e a r | e e
 e a 4 a

36

e e D e | r r r | F r e D | (e e e
 r r 4 a

40

D r e a | (e a e r | G G r e | e e D r | a r a r
 a 4 a e e

45

e | r e D a | e e r e | F e | e r a r
 r a a a a e a r e r

50

D a e | G a G a | a a
 a a a

(23) Allemande

(Ré majeur)

1 2 3 4 5 6 7 8 9 10 11 12 13 14 15 16 17 18 19 20 21 22 23 24 25 26 27 28 29 30 31 32

1 2 3 4 5 6 7 8 9 10 11 12 13 14 15 16 17 18 19 20 21 22 23 24 25 26 27 28 29 30 31 32

13

r m r m r m r m r m
e g e f e r e e r a a e
a a r r e r a a a a a a a

15

r m r m r m
r r e a e r e a a e a a a a
a a e r a a a a

(24) Gigue (Guigue)

(Ré majeur)

3

e r e r e r a r a e a e

5

r e a e e r a e a e

10

r e r a r e a e a e r a

16

k i k i k h k i g h f e e f

21

e f e a e a a

(25) Gavotte

(Ré majeur)

Musical notation for the first system (measures 1-3). The key signature is one sharp (F#), and the time signature is common time (C). The notation includes a treble clef, a common time signature, and a C-clef on the first line. The notes are: *e* (quarter), *f* (quarter), *e* (quarter), *g* (quarter), *i* (quarter), *k* (quarter), *i* (quarter), *k* (quarter), *f* (quarter). There are slurs over the first two notes and the last two notes. There are also some handwritten markings below the staff: *ma* under the first measure, *a a a* under the second measure, and *ma r f* under the third measure.

Musical notation for the second system (measures 4-6). The notation includes a treble clef, a common time signature, and a C-clef on the first line. The notes are: *f* (quarter), *e* (quarter), *r* (quarter), *a* (quarter), *e* (quarter), *e* (quarter), *f* (quarter), *e* (quarter), *r* (quarter), *e* (quarter), *a* (quarter), *a* (quarter), *r* (quarter), *e* (quarter). There are slurs over the first four notes and the last four notes. There are also some handwritten markings below the staff: *a* under the first measure, *a* under the second measure, *a* under the third measure, and *a e* under the fourth measure.

Musical notation for the third system (measures 7-9). The notation includes a treble clef, a common time signature, and a C-clef on the first line. The notes are: *r* (quarter), *e* (quarter), *a* (quarter), *r* (quarter), *e* (quarter), *a* (quarter), *a* (quarter), *e* (quarter), *a* (quarter), *f* (quarter). There are slurs over the first four notes and the last four notes. There are also some handwritten markings below the staff: *a a* under the first measure, *e a* under the second measure, and *ma* under the third measure. The system ends with a double bar line and a decorative flourish.

(26) Menuet

(Ré majeur)

3

g e a r | e r | e r e g | r r

a e | a e | a f | a

5

r e r e | r e r a | r e a e | a a

r a | a a | a a | a

9

e r e a | r | a e a r | e a

a | e a | e a | a

13

e r e a | r a r a | a r a a | a a r a r

a r | e e | a a | a

17

a e a r | e | f f e | r e r

e r | a r e f | r e a | a e r

R

21

e r e r | e a | r r a e | a a

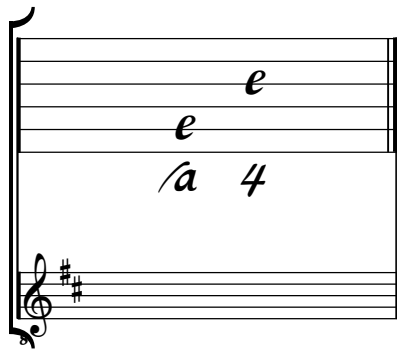
e r | a r e r | a a | a

R

Tonalité : Ré majeur

Accord des basses du luth : 2 dièses

Scordature par octave



Accord des 11 chœurs du luth



