

[Compositeur anonyme]

[Partie]

Air, Bourla, Canarie, Menuet, Guigue

Do majeur et Ré mineur

Manuscrit de Brno CZ-Bm372

Musée morave régional à Brno

Provenance : bibliothèque musicale de l'abbaye de Rajhrad 5.b.

(CZ-Bm Ms. sig. A.372)

Pages 17 & 18



Air

The musical score for 'Air' is written on a grand staff with two systems of two staves each. The notation includes rhythmic values (quarter, eighth, and sixteenth notes), rests, and various ornaments such as mordents and trills. The piece begins with a 3/4 time signature, which changes to 4/4 at measure 4. A repeat sign with first and second endings is used at measure 11. The score concludes with a double bar line and a decorative flourish.

Measures 1-3: 3/4 time signature. Melody: quarter, quarter, eighth, quarter, quarter, eighth, quarter, quarter, eighth. Bass: quarter, quarter, quarter, quarter, quarter, quarter, quarter, quarter, quarter.

Measures 4-7: 4/4 time signature. Melody: quarter, quarter, quarter, quarter, quarter, quarter, quarter, quarter, quarter, quarter, quarter, quarter. Bass: quarter, quarter, quarter, quarter, quarter, quarter, quarter, quarter, quarter, quarter, quarter, quarter.

Measures 8-10: 4/4 time signature. Melody: quarter, quarter, quarter, quarter, quarter, quarter, quarter, quarter, quarter, quarter, quarter, quarter. Bass: quarter, quarter, quarter, quarter, quarter, quarter, quarter, quarter, quarter, quarter, quarter, quarter.

Measures 11-14: 4/4 time signature. Melody: quarter, quarter, quarter, quarter, quarter, quarter, quarter, quarter, quarter, quarter, quarter, quarter. Bass: quarter, quarter, quarter, quarter, quarter, quarter, quarter, quarter, quarter, quarter, quarter, quarter.

Measures 15-16: 4/4 time signature. Melody: quarter, quarter, quarter, quarter, quarter, quarter, quarter, quarter, quarter, quarter, quarter, quarter. Bass: quarter, quarter, quarter, quarter, quarter, quarter, quarter, quarter, quarter, quarter, quarter, quarter.

Bourla

(1*)

3

7

11

15

1. Plaisanterie. Origine provenç. burga et burtaire, moqueur ; cat. et espagn. burla ; portug. bulra. D'après Ménage, approuvé par Diez, de burra, bourre, employé déjà par Ausone dans le sens de plaisanterie, par l'intermédiaire d'un diminutif burrula, burla. La première édition de Molière a bourle, changé dans beaucoup d'éditions, mais à tort, en bourde. (dictionnaire Littré)

Canarie

Handwritten musical score for "Canarie". The score is written on five systems, each consisting of two staves. The time signature is 6/8. The notation uses rhythmic symbols (r, a) and pitch letters (a, e, r, b) to represent the melody. The piece concludes with a large decorative flourish.

System 1:
Rhythm: ̣ ̣ ̣ ̣ ̣ ̣ | ̣ ̣ ̣ ̣ ̣ ̣
Staff 1: 6 | r a r r a r | a a a a r |
Staff 2: 8 | a | a

System 2 (labeled 3):
Rhythm: ̣ ̣ ̣ ̣ ̣ ̣ | ̣ ̣ | ̣ ̣ ̣
Staff 1: a a a r a | r | a r a r a r
Staff 2: | a | 4 | r

System 3 (labeled 6):
Rhythm: ̣ ̣ ̣ ̣ ̣ ̣ | ̣ ̣ ̣ ̣ ̣ ̣ | ̣ ̣
Staff 1: a a a a a | r a r a r b | r
Staff 2: | a | a 4 a | a

System 4 (labeled 9):
Rhythm: ̣ ̣ ̣ ̣ ̣ ̣ | ̣ ̣ ̣ ̣ ̣ ̣ | ̣ ̣ ̣ ̣ ̣ ̣
Staff 1: r a r r a r | a a a a a a | a r a a r a
Staff 2: | a | a a a a a | a

System 5 (labeled 12):
Rhythm: ̣ ̣ ̣ ̣ ̣ ̣ | ̣ ̣ ̣ ̣ ̣ ̣ | ̣ ̣ ̣ ̣ ̣ ̣
Staff 1: r | r a r a r a | r a r
Staff 2: | a | a a a a a | a a

System 6 (labeled 15):
Rhythm: ̣ ̣ ̣ ̣ ̣ ̣ | ̣ ̣
Staff 1: a r a a r | a
Staff 2: | a | 4

Menuet

3
4

5

9

13

18

22

Guigue

This system shows the first three measures of the piece. Above the staves are rhythmic flags: quarter notes, eighth notes, and quarter notes. The first staff has a treble clef and a '6' time signature. The second staff has a bass clef and an '8' time signature. The notes are: a a r r | e e r r | a e a r.

This system shows measures 4 through 8. The notes are: e e r | a a e | a a e a | e a r r | e a.

This system shows measures 9 through 12. The notes are: a a r r | e e r r | a e a r | e r a.

This system shows measures 13 through 16. The notes are: r a a | e a r r | a r a e | e a.

This system shows measures 17 through 20. The notes are: e e e e | e e e e | e e r e | e e e.

This system shows measures 21 through 24. The notes are: a e r e | e f h | h a r | e a a.

25

Treble clef, 2/4 time signature.
 Melody: G4, A4, B4, C5, B4, A4, G4, F4.
 Bass line: G3, A3, B2, C3, D3, E3, F3, G3.
 Dynamics: *a*, *f*, *a*, *f*.
 Repeat sign at the end of measure 28.

29

Treble clef, 2/4 time signature.
 Melody: G4, A4, B4, C5, B4, A4, G4, F4.
 Bass line: G3, A3, B2, C3, D3, E3, F3, G3.
 Dynamics: *f*, *a*, *f*, *a*.
 Repeat sign at the end of measure 32.

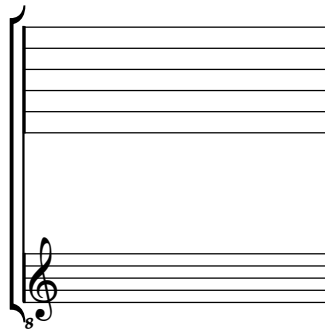
33

Treble clef, 2/4 time signature.
 Melody: G4, A4, B4, C5.
 Bass line: G3, A3, B2, C3.
 Dynamics: *a*, *f*.
 Repeat sign at the end of measure 34.

Tonalité : Do majeur (et Ré mineur)

Accord ordinaire du luth

Scordature par octave



Accord des 11 chœurs du luth

