

[Compositeur anonyme]

Sarb

(Sarabande)

Do majeur

Manuscrit de Brno CZ-Bm372

Musée morave régional à Brno

Provenance : bibliothèque musicale de l'abbaye de Rajhrad 5.b.

(CZ-Bm Ms. sig. A.372)

Page 25



Sarb (Sarabande)

The image shows a handwritten musical score for a Sarabande in D major. The score is written on a grand staff (treble and bass clefs) and includes several systems of music with various annotations:

- System 1:** Features a 3/4 time signature and a 4-measure rest. Rhythmic markings above the staff include quarter notes, dotted quarter notes, and half notes. The melody starts with a quarter note 'a' followed by a dotted quarter note 'a' and a half note 'a'. The bass line has a 4-measure rest.
- System 2:** Continues the melody with notes 'e', 'e', 'a', 'a', 'a', 'a', 'a', 'a'. The bass line has notes 'a', 'a', 'a', 'a', 'a', 'a', 'a', 'a'. There are several slurs and accents throughout.
- System 3:** Shows a 6-measure rest in the bass line. The melody continues with notes 'a', 'a', 'a', 'a', 'a', 'a', 'a', 'a'. There are slurs and accents throughout.
- System 4:** Labeled '1.' and '8'. The melody starts with a quarter note 'a' followed by a dotted quarter note 'a' and a half note 'a'. The bass line has a 4-measure rest.
- System 5:** Labeled '2.' and '9'. The melody starts with a quarter note 'a' followed by a dotted quarter note 'a' and a half note 'a'. The bass line has a 4-measure rest.
- System 6:** Labeled '11'. The melody starts with a quarter note 'a' followed by a dotted quarter note 'a' and a half note 'a'. The bass line has a 4-measure rest.

1. Original : indication rythmique de noire pointée

13

R

16

4
(1*)

19

4
(2*)

21

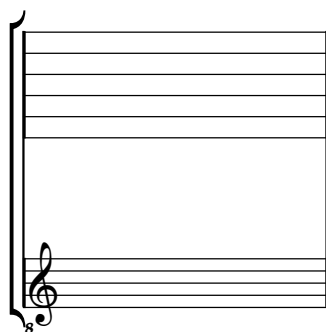
4
(3*)

1. Original : indication rythmique de croche pointée
 2. Tablature originale : croche pointée
 3. Original : indication rythmique de noire pointée

Tonalité : Do majeur

Accord ordinaire du luth

Scordature par octave



Accord des 11 chœurs du luth

