

[Compositeur anonyme]

Bouree

Do majeur

Manuscrit de Brno CZ-Bm372

Musée morave régional à Brno

Provenance : bibliothèque musicale de l'abbaye de Rajhrad 5.b.

(CZ-Bm Ms. sig. A.372)

Page 20



Bouree

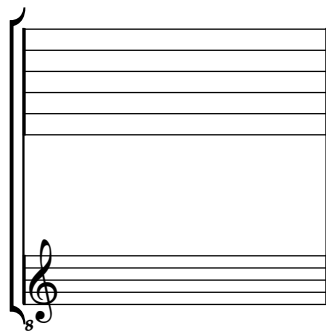
The musical score for the Bouree in C major is presented in a single-staff format. It begins with a common time signature (C) and a treble clef. The notation includes various rhythmic values such as quarter, eighth, and sixteenth notes, as well as rests. The piece is divided into measures, with measure numbers 4, 8, 12, 17, and 22 indicated on the left. The score concludes with a decorative flourish. Below the staff, there are handwritten annotations in a cursive script, likely representing the original manuscript's notation, including letters like 'r', 'a', 'e', and 'a', and symbols like 'p' and 'a' with various markings.

1. Original : indication rythmique de blanche non pointée

Tonalité : Do majeur

Accord ordinaire du luth

Scordature par octave



Accord des 11 chœurs du luth



