

Wolff Jacob Lauffensteiner

(avril 1676 - 26 mars 1754)

Partie

(WeissSW107.2, 4 et 5 et WeissSW108.1 ?)

Fa majeur

Manuscrits de Brno CZ-Bm371

Musée morave régional à Brno

Provenance : bibliothèque musicale de l'abbaye de Rajhrad 5.a.

CZ-Bm Ms. sig. A.371

Pages 113 - 117

Voir dans le manuscrit Harrach A-ROII, pages 27 à 36, Courante, Rigodon et Gigue de la Suite 1. [HRII3]

Voir dans le manuscrit de Göttweig A-GÖ1, folios 28r. à 29v., Courante (Courente), Rigodon (Rigidon) et Gigue (Guigue) de la Suite. [A-GO1_56]

Voir dans le manuscrit de Göttweig A-GO1, folio 27r., [Gigue]. [A-GO1_54]



Allemande

The image displays a musical score for an Allemande, consisting of nine systems of music. Each system includes a rhythmic staff with notes and stems, and a lute tablature staff with letters 'a' through 'i' and numbers '4' and '6'. The notation is in a historical style, likely from a 17th-century manuscript. The first system starts with a common time signature 'C'. The second system is marked with a '2' at the beginning. The third system is marked with a '4'. The fourth system is marked with a '6'. The fifth system is marked with a '4'. The sixth system is marked with a '4'. The seventh system is marked with a '4' and includes first and second endings. The eighth system is marked with a '4'. The ninth system is marked with a '4'. The score concludes with a double bar line and repeat signs.

1. La tablature originale est destinée au luth à 11 chœurs. Cependant, avec un luth à 13 chœurs il est beaucoup plus naturel d'octavier ces deux basses.

11

Handwritten musical notation for measures 11-12. The top staff contains notes with dynamic markings (m, f) and slurs. The bottom staff shows a rhythmic pattern of eighth notes.

13

Handwritten musical notation for measures 13-14. The top staff contains notes with dynamic markings (f) and slurs. The bottom staff shows a rhythmic pattern of eighth notes.

15

Handwritten musical notation for measures 15-16. The top staff contains notes with dynamic markings (h, f) and slurs. The bottom staff shows a rhythmic pattern of eighth notes.

17

Handwritten musical notation for measures 17-18. The top staff contains notes with dynamic markings (f, h) and slurs. The bottom staff shows a rhythmic pattern of eighth notes.

19

Handwritten musical notation for measures 19-20. The top staff contains notes with dynamic markings (m) and slurs. The bottom staff shows a rhythmic pattern of eighth notes.

21

Handwritten musical notation for measure 21. The top staff contains notes with dynamic markings (m) and slurs. The bottom staff shows a rhythmic pattern of eighth notes.

Courante

Handwritten musical score for Courante, featuring a treble and bass staff with various notes, rests, and dynamic markings. The score is divided into systems, with measure numbers 4, 8, 12, 16, 20, and 24 indicated on the left. The notation includes slurs, accents, and dynamic markings such as *f* and *mf*. The piece concludes with a double bar line and repeat dots.

System 1 (Measures 1-4):
 Treble staff: *p* a a a | *p* a e r a | *p* r a r a r | *p* e r a h f h f
 Bass staff: a a a | a a a | a a a | a a a

System 2 (Measures 5-8):
 Treble staff: *f* h h h h | *f* h f f h f | *p* h f a e r a | *p* r a r r a r
 Bass staff: a a a | a a a | a a a | a a a

System 3 (Measures 9-12):
 Treble staff: *p* a a a a r a | *p* f r f r r | *p* a e a b r | *p* b r b a a
 Bass staff: a a a | a a a | a a a | a a a

System 4 (Measures 13-16):
 Treble staff: *p* a r a r a | *p* r a a r a | *p* r a r e f | *p* e h g h
 Bass staff: b a a | a a a | a a a | a a a

System 5 (Measures 17-20):
 Treble staff: *p* g f i h | *p* f h f h g | *p* h h g h | *p* f a r a r r | *p* a a a a
 Bass staff: a a a | a a a | a a a | a a a

System 6 (Measures 21-24):
 Treble staff: *p* e r a | *p* r a a b a r | *p* a r a a a a | *p* a r e r a r
 Bass staff: b a a | a a a | a a a | a a a

System 7 (Measures 25-28):
 Treble staff: *p* a a a a | *p* a a a a | *p* a r a r a | *p* e r a e
 Bass staff: b a a | a a a | a a a | a a a

28

33

37

41

45

49

Menuet (Minuette)

Measures 1-3 of the Minuet. The first staff is a treble clef with a 3/4 time signature. The notes are: h, f, h, f, h (measures 1-2) and a, e, f, e, f (measure 3). The second staff is a bass clef with a 4/4 time signature, showing a single note 'a' in each measure.

Measures 4-8 of the Minuet. The first staff is a treble clef with a 4/4 time signature. The notes are: r, e, r, a, r (measure 4); a, r, a, r (measure 5); a, r, a (measure 6); a, r, a, r (measure 7); a, r, a, a (measure 8). The second staff is a bass clef with a 4/4 time signature, showing notes: a (measure 4), a (measure 5), a (measure 6), a (measure 7), and a (measure 8).

Measures 9-12 of the Minuet. The first staff is a treble clef with a 4/4 time signature. The notes are: h, f, h, f, h (measure 9); f, h, f, h, f (measure 10); a, e, f, e, f (measure 11); r, e, r, a, r (measure 12). The second staff is a bass clef with a 4/4 time signature, showing notes: a (measure 9), a (measure 10), a (measure 11), and a (measure 12).

Measures 13-16 of the Minuet. The first staff is a treble clef with a 4/4 time signature. The notes are: a, r, a, r (measure 13); a, r, a (measure 14); r, a, r, a (measure 15); a, r, a (measure 16). The second staff is a bass clef with a 4/4 time signature, showing notes: a (measure 13), a (measure 14), a (measure 15), and a (measure 16).

Measures 17-20 of the Minuet. The first staff is a treble clef with a 4/4 time signature. The notes are: a, r, e, a (measure 17); r, e, r, a (measure 18); a, r, a, r, a (measure 19); e, a, r, a (measure 20). The second staff is a bass clef with a 4/4 time signature, showing notes: a (measure 17), e (measure 18), a (measure 19), and a (measure 20).

Measures 21-24 of the Minuet. The first staff is a treble clef with a 4/4 time signature. The notes are: a, e, r (measure 21); e, r, e (measure 22); a, e, r (measure 23); r, e, r, a (measure 24). The second staff is a bass clef with a 4/4 time signature, showing notes: a (measure 21), a (measure 22), a (measure 23), and a (measure 24).

25

a

29

a

33

a

37

a

41

a

Rigodon

Musical score for Rigodon, featuring a single melodic line on a five-line staff. The score is divided into measures, with measure numbers 5, 9, 13, 17, 21, 26, and 31 indicated on the left. The notation includes various rhythmic values (quarter, eighth, sixteenth notes, rests) and ornaments (trills, mordents, grace notes). The key signature is one flat (B-flat), and the time signature is 4/4. The score is written in a single system with a common C-clef.

36

a a a h f h f h f h f h f h f h f a r

a a a a a a a a a a a a 6

40

a a a a a a a a a a a a

4 4 6 4 a 4

46

a a a a a a a a a a a a

50

a a a e e a a a e e a e a a a r a e

a a a a a a a

56

a a a a a a a a a a a a

a a a a a a a a a a a a

61

h f h f h f h f h f a r a a a a

a a a a a a a a a a 4

65

a a a a a a a a a a a a

4 4 6 4 a 1

Gigue (Guigue)

♩
♩
♩
♩
♩
♩
♩
♩
♩
♩
♩

♩
♩
♩
♩
♩
♩
♩
♩
♩
♩
♩

♩
♩
♩
♩
♩
♩
♩
♩
♩
♩
♩

♩
♩
♩
♩
♩
♩
♩
♩
♩
♩
♩

♩
♩
♩
♩
♩
♩
♩
♩
♩
♩
♩

♩
♩
♩
♩
♩
♩
♩
♩
♩
♩
♩

1. Tablature originale : La (a sur le 3e chœur).

23

26

30

33

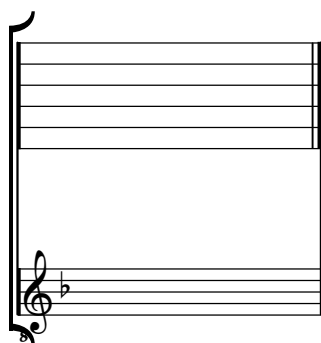
37

1. Tablature originale : Sol (a sur le 7e chœur).

Tonalité : Fa majeur

Accord ordinaire du luth

Scordature par octave



Accord des 11 chœurs du luth

