

*[Compositeur anonyme]*

# Menuet (Mnnette) Trio

Sol majeur et Sol mineur  
*Luth baroque à 11 chœurs*

**Manuscrit de Brno CZ-Bm371**

*Musée morave régional à Brno*

*Provenance : bibliothèque musicale de l'abbaye de Rajhrad 5.a.*

(CZ-Bm Ms. sig. A.371)

*Page 104*



# Menuet (Mnuette)

3 4

a b r b r e a a a a e r e

4

g f e f e g f e g f e a a r e r e e f f

9

e r e r e a r a r r r

13

r r b r b r b r b a r a r a

17

r a a r a r a e r a r r a a a a

R

21

a a r e r f f a a a a

R

# Trio

Musical notation for the first system of the Trio. It consists of a single staff with a treble clef and a 3/4 time signature. The notes are: quarter, quarter, quarter, quarter, quarter, quarter, quarter, quarter, quarter, quarter. The notes are: a, a, a, a, a, a, a, a, a, a. The notes are: a, a, a, a, a, a, a, a, a, a. The notes are: a, a, a, a, a, a, a, a, a, a. The notes are: a, a, a, a, a, a, a, a, a, a.

Musical notation for the second system of the Trio, starting at measure 6. It consists of a single staff with a treble clef and a 3/4 time signature. The notes are: quarter, quarter, quarter, quarter, quarter, quarter, quarter, quarter, quarter, quarter. The notes are: a, a, a, a, a, a, a, a, a, a. The notes are: a, a, a, a, a, a, a, a, a, a. The notes are: a, a, a, a, a, a, a, a, a, a. The notes are: a, a, a, a, a, a, a, a, a, a.

Musical notation for the third system of the Trio, starting at measure 12. It consists of a single staff with a treble clef and a 3/4 time signature. The notes are: quarter, quarter, quarter, quarter, quarter, quarter, quarter, quarter, quarter, quarter. The notes are: a, a, a, a, a, a, a, a, a, a. The notes are: a, a, a, a, a, a, a, a, a, a. The notes are: a, a, a, a, a, a, a, a, a, a. The notes are: a, a, a, a, a, a, a, a, a, a.

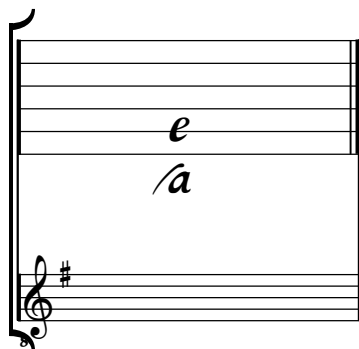
Musical notation for the fourth system of the Trio, starting at measure 18. It consists of a single staff with a treble clef and a 3/4 time signature. The notes are: quarter, quarter, quarter, quarter, quarter, quarter, quarter, quarter, quarter, quarter. The notes are: a, a, a, a, a, a, a, a, a, a. The notes are: a, a, a, a, a, a, a, a, a, a. The notes are: a, a, a, a, a, a, a, a, a, a. The notes are: a, a, a, a, a, a, a, a, a, a.

Musical notation for the fifth system of the Trio, starting at measure 24. It consists of a single staff with a treble clef and a 3/4 time signature. The notes are: quarter, quarter, quarter, quarter, quarter, quarter, quarter, quarter, quarter, quarter. The notes are: a, a, a, a, a, a, a, a, a, a. The notes are: a, a, a, a, a, a, a, a, a, a. The notes are: a, a, a, a, a, a, a, a, a, a. The notes are: a, a, a, a, a, a, a, a, a, a.

# Tonalités : Sol majeur et Sol mineur

*Accord des basses du luth : 1 dièse*

*Scordature par octave*



*Accord des 11 chœurs du luth* <sup>(1\*)</sup>



1. Le Trio peut aussi être joué sur un luth accordé en Sol mineur (basses Fa-naturel et Mi-bémol) ou avec l'accord ordinaire des basses.