

[Compositeur anonyme]

Rondeau

Sol majeur

Luth baroque à 11 chœurs

Manuscrit de Brno CZ-Bm371

Musée morave régional à Brno

Provenance : bibliothèque musicale de l'abbaye de Rajhrad 5.a.

(CZ-Bm Ms. sig. A.371)

Page 92



Rondeau

The musical score for 'Rondeau' is written on a single staff in G major (one sharp) and common time. It consists of 14 measures, with a 'Da Capo' instruction at the end. The notation includes various ornaments such as mordents, grace notes, and trills, along with specific fingerings and breath marks. The piece begins with a common time signature and a C-clef. The first measure starts with a quarter note G, followed by a quarter note A with a mordent and a grace note A. The second measure contains a quarter note G with a mordent, a quarter note A with a mordent, a quarter note G with a mordent, and a quarter note F with a mordent. The third measure has a quarter note G with a mordent, a quarter note E with a mordent, a quarter note G with a mordent, a quarter note G with a mordent, a quarter note F with a mordent, and a quarter note E with a mordent. The fourth measure contains a quarter note G with a mordent, a quarter note E with a mordent, a quarter note G with a mordent, a quarter note G with a mordent, a quarter note F with a mordent, and a quarter note E with a mordent. The fifth measure has a quarter note G with a mordent, a quarter note E with a mordent, a quarter note G with a mordent, a quarter note G with a mordent, a quarter note F with a mordent, and a quarter note E with a mordent. The sixth measure contains a quarter note G with a mordent, a quarter note E with a mordent, a quarter note G with a mordent, a quarter note G with a mordent, a quarter note F with a mordent, and a quarter note E with a mordent. The seventh measure has a quarter note G with a mordent, a quarter note E with a mordent, a quarter note G with a mordent, a quarter note G with a mordent, a quarter note F with a mordent, and a quarter note E with a mordent. The eighth measure contains a quarter note G with a mordent, a quarter note E with a mordent, a quarter note G with a mordent, a quarter note G with a mordent, a quarter note F with a mordent, and a quarter note E with a mordent. The ninth measure has a quarter note G with a mordent, a quarter note E with a mordent, a quarter note G with a mordent, a quarter note G with a mordent, a quarter note F with a mordent, and a quarter note E with a mordent. The tenth measure contains a quarter note G with a mordent, a quarter note E with a mordent, a quarter note G with a mordent, a quarter note G with a mordent, a quarter note F with a mordent, and a quarter note E with a mordent. The eleventh measure has a quarter note G with a mordent, a quarter note E with a mordent, a quarter note G with a mordent, a quarter note G with a mordent, a quarter note F with a mordent, and a quarter note E with a mordent. The twelfth measure contains a quarter note G with a mordent, a quarter note E with a mordent, a quarter note G with a mordent, a quarter note G with a mordent, a quarter note F with a mordent, and a quarter note E with a mordent. The thirteenth measure has a quarter note G with a mordent, a quarter note E with a mordent, a quarter note G with a mordent, a quarter note G with a mordent, a quarter note F with a mordent, and a quarter note E with a mordent. The fourteenth measure contains a quarter note G with a mordent, a quarter note E with a mordent, a quarter note G with a mordent, a quarter note G with a mordent, a quarter note F with a mordent, and a quarter note E with a mordent. The piece ends with a double bar line and a 'Da Capo' instruction.

16

Handwritten musical notation for measures 16-18. Measure 16: G4 quarter, A4 quarter. Measure 17: H4 quarter, G4 quarter, H4 quarter, F4 quarter, G4 quarter, A4 quarter. Measure 18: G4 quarter, F4 quarter, G4 quarter, F4 quarter, E4 quarter, D4 quarter, E4 quarter, F4 quarter. Bass line: A4, A4, A4, G4, A4, A4.

19

Handwritten musical notation for measures 19-21. Measure 19: G4 quarter, H4 quarter, G4 quarter, H4 quarter, G4 quarter, H4 quarter, F4 quarter. Measure 20: E4 quarter, F4 quarter, E4 quarter, A4 quarter, E4 quarter, G4 quarter. Measure 21: G4 quarter, F4 quarter, E4 quarter, G4 quarter, E4 quarter, F4 quarter. Bass line: A4, 4, A4, G4, A4, A4.

22

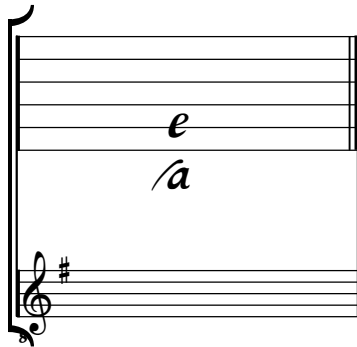
Da Capo

Handwritten musical notation for measures 22-24. Measure 22: E4 quarter, F4 quarter, E4 quarter, G4 quarter, H4 quarter. Measure 23: F4 quarter, F4 quarter, H4 quarter, G4 quarter, H4 quarter, G4 quarter. Measure 24: E4 quarter. Bass line: A4, e, A4, A4, A4, A4.

Tonalité : Sol majeur

Accord des basses du luth : 1 dièse

Scordature par octave



Accord des 11 chœurs du luth

