

[Wolff Jacob Lauffensteiner]

(avril 1676 - 26 mars 1754)

Aria

Fa majeur

Luth baroque à 11 chœurs

Manuscrit de Brno CZ-Bm371

Musée morave régional à Brno

Provenance : bibliothèque musicale de l'abbaye de Rajhrad 5.a.

(CZ-Bm Ms. sig. A.371)

Page 91

Voir dans le manuscrit de Göttweig A-GÖ1, folio 27v., Aria. [A-GO1_54]



Aria

Musical score for Aria, showing a single melodic line with lyrics and tablature. The score is divided into systems of four measures each, with measure numbers 4, 8, 11, 15, and 19. The music is in C major and common time. The lyrics are: "i* i i* i i* a f h h f h h f", "e a# are r rea e r a a", "h a h f a r a r a r a a", "f f f f f a a r a r a r e r a r a h h", "i i h h* e r a a r a r r r a r a r r", "r e f e a s p a r a a a r a". The score includes various musical notations such as notes, rests, slurs, and dynamic markings like "a f" and "f". The tablature consists of letters "a" and "h" on a five-line staff.

1. Tablature originale : blanche non pointée

23

Handwritten musical notation for measures 23-26. Measure 23: notes f, e, f, f. Measure 24: notes a, r, e. Measure 25: notes a, e, r, a, r, a, r, a. Measure 26: notes f, e, a. Bass line: a, a, a, a.

27

Handwritten musical notation for measures 27-30. Measure 27: notes a, r, a, a, r. Measure 28: notes a, e, f, e, e. Measure 29: notes f, e, f, f, e, e. Measure 30: notes f, f, e, f. Bass line: a, 4, a, 4, a, a.

31

Handwritten musical notation for measures 31-33. Measure 31: notes e, a, h*. Measure 32: notes g, h, k. Measure 33: notes g, h, h*. Measure 34: notes h, g, h, g, h, g, h. Bass line: a, a, a.

Da Capo

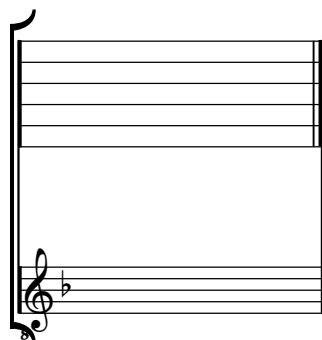
34

Handwritten musical notation for measure 34. Notes: h, g, g, h. Bass line: a, a. Ends with a decorative flourish.

Tonalité : Fa majeur

Accord ordinaire du luth

Scordature par octave



Accord des 11 chœurs du luth

Musical notation for the 11-voice lute chord. The notation is written on two staves. The top staff is a six-line staff with a treble clef and a key signature of one flat (B-flat). It contains a series of notes, each labeled with a lowercase letter 'a', representing the 11 voices of the chord. The notes are: a (string 1), a (string 2), a (string 3), a (string 4), a (string 5), and a (string 6). The bottom staff is a six-line staff with a bass clef and a key signature of one flat (B-flat). It contains a series of notes, each labeled with a lowercase letter 'a', representing the 11 voices of the chord. The notes are: a (string 1), a (string 2), a (string 3), a (string 4), a (string 5), and a (string 6). The number '4' is written at the end of the bottom staff.