

*[Compositeur anonyme]*

# Menuet (Men:)

Fa majeur

*Luth baroque à 11 chœurs*

**Manuscrit de Brno CZ-Bm371**

*Musée morave régional à Brno*

*Provenance : bibliothèque musicale de l'abbaye de Rajhrad 5.a.*

(CZ-Bm Ms. sig. A.371)

*Page 74*



# Menuet (Men:)

Musical score for Minuet in F major, measures 1-22. The score is written on a grand staff (treble and bass clefs) with a 3/4 time signature. The key signature has one flat (F major). The notation includes various rhythmic values (quarter, eighth, sixteenth notes, rests) and dynamic markings (f, h). The piece concludes with a decorative flourish.

Measures 1-3: Treble clef, 3/4 time. Notes: a, a, a, a, a. Bass clef: 3, a, a, a. Measure 4: Treble clef, 4/4 time. Notes: a, a, a, a. Bass clef: 4, a, a, a.

Measures 4-8: Treble clef, 4/4 time. Notes: f, e, f, f, e, f, e, a, f. Bass clef: a, a, a, a, a, a, a, a. Measure 9: Treble clef, 4/4 time. Notes: h, f, f, e, a, a, a, a, a, a, a. Bass clef: a, a, a, a, a, a, a, a.

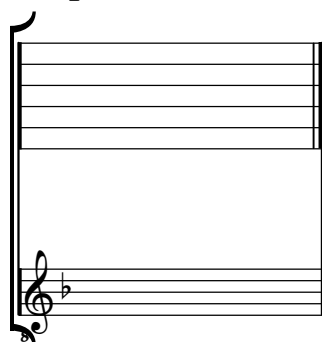
Measures 13-17: Treble clef, 4/4 time. Notes: a, a, a, a, a, a, a, a, a, a, a, a, a, a, a, a. Bass clef: a, a, a, a, a, a, a, a, a, a, a, a, a, a, a, a.

Measures 18-21: Treble clef, 4/4 time. Notes: f, e, f, e, f, e, f, e, f, e, f. Bass clef: a, a, a, a, a, a, a, a. Measure 22: Treble clef, 4/4 time. Notes: f, e, f, e, f, e, f. Bass clef: a, a, a, a.

# Tonalité : Fa majeur

*Accord ordinaire du luth*

*Scordature par octave*



*Accord des 11 chœurs du luth*



