

[Compositeur anonyme]

Chaconne (Ciaccone)

Fa majeur
Luth baroque à 11 chœurs

Manuscrit de Brno CZ-Bm371

Musée morave régional à Brno

Provenance : bibliothèque musicale de l'abbaye de Rajhrad 5.a.

(CZ-Bm Ms. sig. A.371)

Pages 71 - 72



Chaconne (Ciaccone)

Handwritten musical score for Chaconne (Ciaccone) in F major, 3/4 time. The score is divided into systems with measure numbers 3, 7, 11, 16, and 21. The notation includes rhythmic values (quarter, eighth, sixteenth notes), rests, and various ornaments (trills, mordents, grace notes). The key signature is one flat (F major).

System 1 (Measures 1-3):
 Measure 1: Quarter note (F), quarter note (A), quarter note (C).
 Measure 2: Quarter note (F), quarter note (A), quarter note (C).
 Measure 3: Quarter note (F), quarter note (A), quarter note (C).

System 2 (Measures 4-6):
 Measure 4: Quarter note (F), quarter note (A), quarter note (C).
 Measure 5: Quarter note (F), quarter note (A), quarter note (C).
 Measure 6: Quarter note (F), quarter note (A), quarter note (C).

System 3 (Measures 7-9):
 Measure 7: Quarter note (F), quarter note (A), quarter note (C).
 Measure 8: Quarter note (F), quarter note (A), quarter note (C).
 Measure 9: Quarter note (F), quarter note (A), quarter note (C).

System 4 (Measures 10-15):
 Measure 10: Quarter note (F), quarter note (A), quarter note (C).
 Measure 11: Quarter note (F), quarter note (A), quarter note (C).
 Measure 12: Quarter note (F), quarter note (A), quarter note (C).
 Measure 13: Quarter note (F), quarter note (A), quarter note (C).
 Measure 14: Quarter note (F), quarter note (A), quarter note (C).
 Measure 15: Quarter note (F), quarter note (A), quarter note (C).

System 5 (Measures 16-20):
 Measure 16: Quarter note (F), quarter note (A), quarter note (C).
 Measure 17: Quarter note (F), quarter note (A), quarter note (C).
 Measure 18: Quarter note (F), quarter note (A), quarter note (C).
 Measure 19: Quarter note (F), quarter note (A), quarter note (C).
 Measure 20: Quarter note (F), quarter note (A), quarter note (C).

System 6 (Measures 21-22):
 Measure 21: Quarter note (F), quarter note (A), quarter note (C).
 Measure 22: Quarter note (F), quarter note (A), quarter note (C).

23

25

27

29

31

33

36

.../...

39

a e a h a r r r h h a a r a a r r h f
 a a a a 4

43

h a a a a g r a f a a a a a a e a
 h a 4 a

47

e e a a a e a r r r r r a a a a a a
 a a a a

50

h h h h a r a f f r r f f r a e e r a a r a a r a
 4 a 4 4 4 4 4

53

a a f h f f h f h i h i h i h k h i h f h f h f h f h f
 a a a a a

56

f e f e f e f a r a r a r e r a r a r a r a r a r a
 a 4 a a

59

e r a a f e f a f e f h f h f h f a h a h a h a h a
 a h a h

(1*)

1. Liaison ascendante absente de la tablature originale

62

h a h a i h h | h i h i h h h h h | h i h i h h h h

65

h a h a i h h | i h h h k | h h k h

68

k h i | h i h | i h h h

71

a a a | a a a | a a r | s | a | m

a a e

77

r | a r a | f a a e r a | f a b a r

4 4 4 4

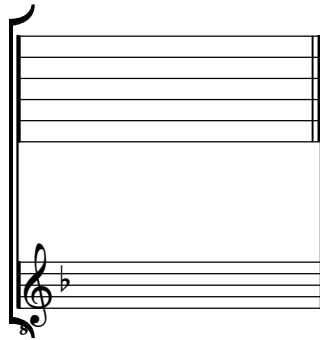
80

a a e a a e e a a a

Tonalité : Fa majeur

Accord ordinaire du luth

Scordature par octave



Accord des 11 chœurs du luth

