

[Compositeur anonyme]

[Partie]

Fa majeur

Luth baroque à 11 chœurs

Manuscrit de Brno CZ-Bm371

Musée morave régional à Brno

Provenance : bibliothèque musicale de l'abbaye de Rajhrad 5.a.

(CZ-Bm Ms. sig. A.371)

Pages 47 - 49



Allemande (Allemanda)

Handwritten musical score for Allemande (Allemanda) in C major. The score consists of a single melodic line on a five-line staff. The key signature is one sharp (F#), and the time signature is common time (C). The piece is divided into measures, with measure numbers 2, 4, 5, 6, 7, and 10 indicated on the left. The notation includes various rhythmic values such as eighth, sixteenth, and thirty-second notes, as well as rests and accidentals. The score is written in a clear, legible hand.

11

12

13

14

15

16

Rigodon

4

8

14

18

22

R

R

Menuet (Menuete)

3

a b a a a a a a a a

5

a r e e a a a a a a a a

9

h f h h h h h f h h a r a

14

a a a a a a a a

Menuet

Musical score for a Minuet in F major, featuring a vocal line with lyrics and a piano accompaniment. The score is divided into systems of four measures each, with measure numbers 1, 5, 10, 15, 19, 23, and 27. It includes various musical notations such as triplets, slurs, and dynamic markings like 'ex' and 'f'.

System 1 (Measures 1-4): Measure 1: *g* *a* *r* *e* *a* *r* *e* (triplet). Measure 2: *a* *r*. Measure 3: *r* *b* *a* *r* (triplet). Measure 4: *a* *r* *a* *a*.

System 2 (Measures 5-8): Measure 5: *e* *a* *r* *a* *a* *r* *a* (triplet). Measure 6: *a* *a*. Measure 7: *a* *a* (first ending). Measure 8: *a* *a* (second ending).

System 3 (Measures 9-12): Measure 9: *f* *r* *a* *r* *r* *a* *a* (triplet). Measure 10: *a* *a*. Measure 11: *g* *e* *r* *a* *a* *r* *a* (triplet). Measure 12: *e* *e*.

System 4 (Measures 13-16): Measure 13: *a* *e* *x*. Measure 14: *a* *r* *e* *a* *r* *e* *a* (triplet). Measure 15: *r* *a* *e* *r*. Measure 16: *a* *r* *a* *e*.

System 5 (Measures 17-20): Measure 17: *a* *r* *e* *a* *r* *e* *a* *r* *e* (triplet). Measure 18: *a*. Measure 19: *f* *e* *f* *e* *f* *e* *r* *a* (triplet). Measure 20: *a* *a* *r*.

System 6 (Measures 21-24): Measure 21: *r* *a* *r* *a*. Measure 22: *r* *r* *b* *r* *r*. Measure 23: *f* *e* *f* *e* *f* *e* (triplet). Measure 24: *r* *r* *b* *r* *r*.

System 7 (Measures 25-28): Measure 25: *f* *e* *f* *e* *f* *e* (triplet). Measure 26: *a* *r* *e* (triplet). Measure 27: *a* *b* *a*. Measure 28: *a* (with a fermata).

Sarabande (Sarab:)

Handwritten musical score for Sarabande in F major, 3/4 time. The score consists of seven systems of music, each with a treble clef and a key signature of one flat (F major). The notation includes notes, rests, and various ornaments (trills, mordents, etc.). The piece begins with a 3/4 time signature and a common time signature (C) in the first measure. The score is marked with measure numbers 5, 9, 12, 16, 20, and 25. The piece concludes with a repeat sign and a fermata.

5

9

12

16

20

25

Gigue (Guigue)

Handwritten musical score for Gigue (Guigue). The score is written on a grand staff (treble and bass clefs) and includes various musical notations such as notes, rests, accidentals, and dynamic markings. The piece is in 6/8 time and features several measures with a 4-measure rest.

Measures 1-4: Treble clef, 6/8 time. Notes: a, a, a, a, b, a. Bass clef: a, a, a, a, a, a. Measure 4 has a 4-measure rest.

Measures 5-8: Treble clef, 6/8 time. Notes: b, a, b, a, b, a. Bass clef: r, a, r, a, r, a. Measure 8 has a 4-measure rest.

Measures 9-13: Treble clef, 6/8 time. Notes: a, r, a, a, a, a. Bass clef: a, a, a, a, a, a. Measure 13 has a 4-measure rest.

Measures 14-18: Treble clef, 6/8 time. Notes: a, a, a, a, a, a. Bass clef: a, a, a, a, a, a. Measure 18 has a 4-measure rest.

Measures 19-23: Treble clef, 6/8 time. Notes: a, b, a, a, a, a. Bass clef: a, a, a, a, a, a. Measure 23 has a 4-measure rest.

Measures 24-28: Treble clef, 6/8 time. Notes: a, a, a, a, a, a. Bass clef: a, a, a, a, a, a. Measure 28 has a 4-measure rest.

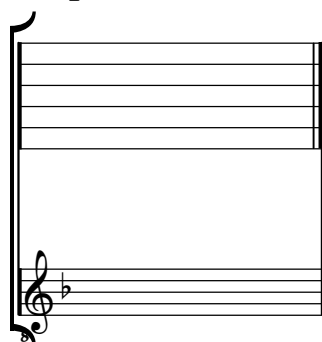
Measures 29-32: Treble clef, 6/8 time. Notes: a, a, a, a, a, a. Bass clef: a, a, a, a, a, a. Measure 32 has a 4-measure rest.

The score concludes with a double bar line and a large decorative flourish.

Tonalité : Fa majeur

Accord ordinaire du luth

Scordature par octave



Accord des 11 chœurs du luth

